



Financials and Supply Change Management Image 50 Accessibility Supplemental

CONTENTS

Introduction.....	3
Accessibility.....	3
Multiple Fixes to Fluid Approvals	3
Finalize and Print Invoices runs successfully in Accessibility Mode	4
My Delegates Tile opens successfully in Accessibility Mode	4
Create Delegation Request contains correct heading.....	5
Multiple Fixes to Navigating through Update Employee Detail	6

Introduction

The Image/Upgrade Overview Document is intended to provide ctcLink users with a summary of the changes that will be made in the system as a result of the upcoming image or PeopleTools upgrade implementation. Oracle releases multiple PeopleSoft updates, called images, for each pillar every year. Each Image contains bug fixes and features that are important for PeopleSoft to work well. PeopleTools upgrades update the underlying framework of the system. There are minimal changes that are noticeable to the end users. Below is an overview of the changes that you can expect to see as part of this upgrade.

Accessibility

Multiple Fixes to Fluid Approvals

Fluid approval sort options are now correct in Accessibility mode and there is a message prompting for Ok to change sort option or cancel that is read by the screen reader. View detail hyperlink contains details that are read by the screen reader. Previously, there was no message prompting for Ok to change sort option or cancel and the sort did not always change. The view detail hyperlink previously contained 'Message not found'. These changes enable screen reader users to easily sort the items on the page and access the details of an item.

Navigation

NavBar > Approvals

Image: Fluid Approval Page Prior to Image 50

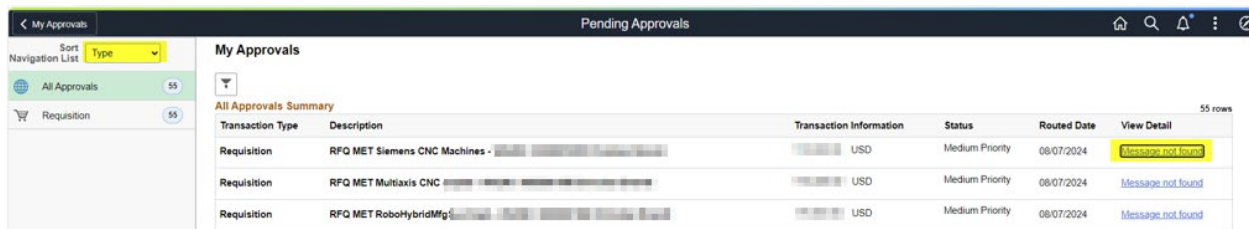
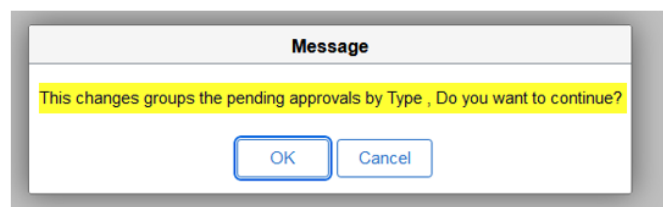
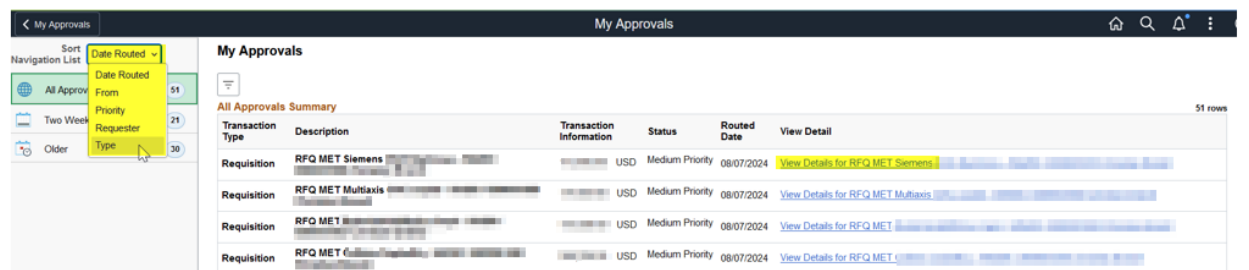


Image: Fluid Approval Page in Image 50



Finalize and Print Invoices runs successfully in Accessibility Mode

Previously the process ran to no-success in Accessibility Mode.

Navigation

Navbar>Billing>Generate Invoices>Non-Consolidated>Finalize and Print Invoices

My Delegates Tile opens successfully in Accessibility Mode

Navigation

Employee Self Service > Delegations > My Delegates

Image: My Delegates Tile prior to Image 50

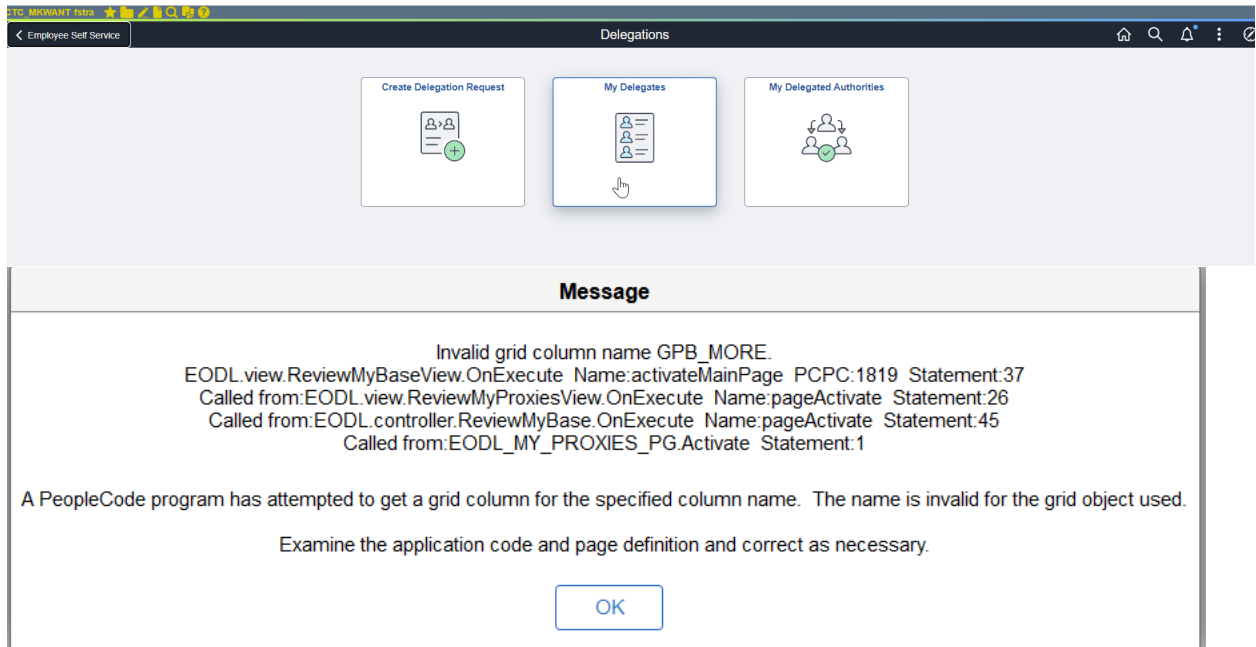
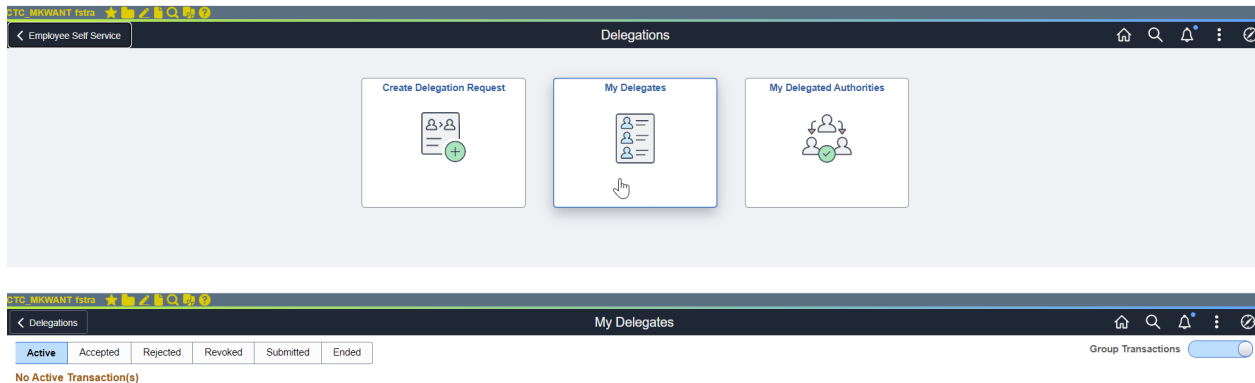


Image: My Delegates Tile in Image 50



Create Delegation Request contains correct heading.

Navigation

Employee Self Service > Delegations > Create Delegation Request

Previously, 'Message Not Found' appeared in Step 2 and was read by the screen reader. Now the correct heading of 'Photo' appears and is read by the screen reader.

Image: Create Delegation Request prior to Image 50

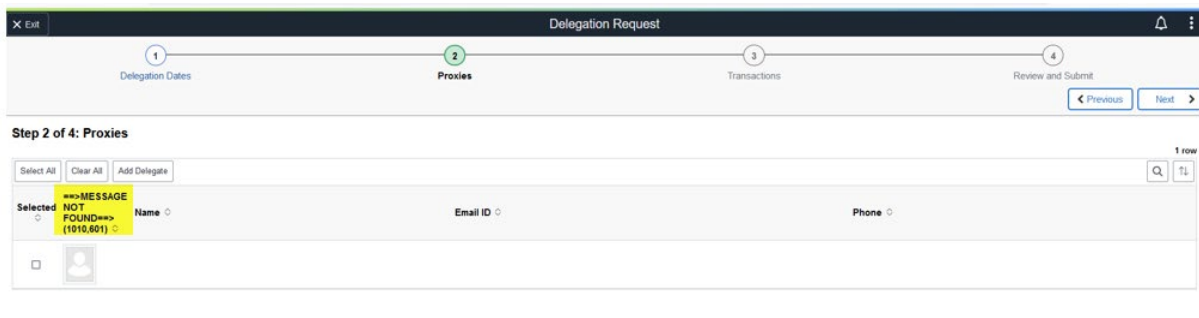
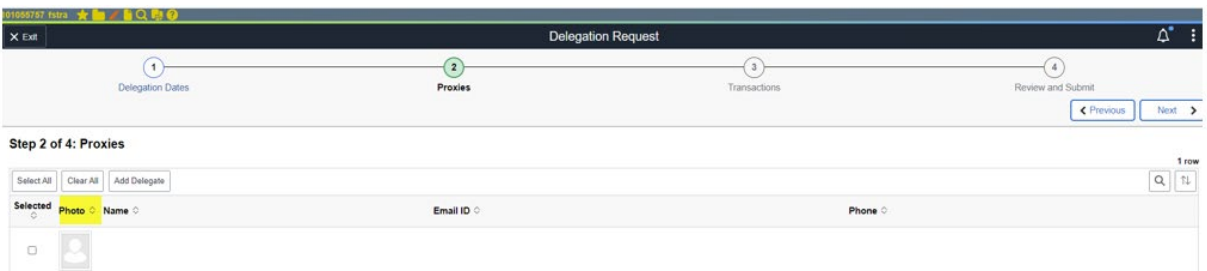


Image: Create Delegation Request in Image 50



Multiple Fixes to Navigating through Update Employee Detail

Navigation

Travel and Expenses>Manage Employee Information>Update Employee Detail

Tab order correctly accesses all fields in the correct order for all pages of Update Employee Detail. All fields are correctly identified to the screen reader.

Previously, some fields on the User Defaults and Employee Data tabs were not available to the screen reader and some fields were out of order or identified by the screen reader as 'Message not Found'.

Image: Update Employee Detail prior to Image 50

< Customer Contracts

Employee Data | Organizational Data | User Defaults | Bank Accounts | Corporate Card Information >

Test Employee

Employee Information

* Last Name * First Name

Telephone

Employee Base:

Home
 Office

*Personnel Status

Payments Sent To:

Home Address
 Mailing Address

Phone Number

?

Row	Phone Type	International Prefix	Phone	Extension	Description	Add row	Delete row
1	<input type="text"/>	<input type="text"/>	<input type="text"/>	<input type="text"/>	<input type="text"/>	<input type="button" value="+"/>	<input type="button" value="-"/>

Home Address

Country United States

Address 1

Address 2 Address 3

City

County Zip Code

State

Image: Update Employee Detail in Image 50

< Customer Contracts

Employee Data

Organizational Data

User Defaults

Bank Accounts

Corporate Card Information

Transportation Information

User Payment Option

Test Employee

Employee Information

* Last Name * First Name Middle Name

Preferred Last Name Preferred First Name Preferred Middle Name

* Display Name

Telephone

Employee Base:

Home
 Office

*Personnel Status

Payments Sent To:

Home Address
 Mailing Address

Phone Number

?

Row	Phone Type	International Prefix	Phone	Extension	Description	Add row	Delete row
1	<input type="text"/>	<input type="text"/>	<input type="text"/>	<input type="text"/>	<input type="text"/>	+	-

Home Address

Country

Address 1

Address 2 Address 3

City

County Zip Code

State

NVDA Speech Viewer Output in Image 50 contains all fields in correct order:

Phone Number grouping is now read correctly before the Home Address grouping:

Phone Number grouping Help Phone Number button

Phone Number. Table displays row 1 of 1. table with 2 rows and 8 columns row 1 column 2 Phone Type Sort button

column 3 International Prefix Sort button

column 4 Phone Sort button

column 5 Extension Sort button

column 6 Description Sort button
Row 1 row 2 * Phone Type column 2
Phone Type: combo box collapsed required
Row 1 row 2 * International Prefix column 3
International Prefix: edit required blank
Row 1 row 2 * Phone column 4
Phone: edit required blank
Row 1 row 2 Extension column 5
Extension: edit blank
Row 1 row 2 Description column 6
Description: edit blank
Row 1 row 2 Add row column 7 button
Delete row column 8 button
Home Address grouping
Country edit United States selected USA
Look up Country button
Address Line 1: edit blank
Address Line 2: edit blank
Address Line 3: edit blank
City: edit blank
County: edit blank
Postal Code: edit blank
State: edit blank
Look up State button
Mailing Address grouping
Country edit blank
Look up Country button
Save button

User Defaults page is now read by the screen reader, previously it was not included in the screen reader output.

User Defaults main landmark

Default Creation Method grouping

Expense Report combo box Open a Blank Report collapsed required

Time Report combo box Open a Blank Report collapsed required

Travel Authorization combo box Open a Blank Authorization collapsed required

Receipt Defaults grouping Receipts Not Required check box not checked

Expense Defaults grouping

Report Description edit blank

Per Diem Range combo box collapsed

Business Purpose combo box collapsed

Billing Type combo box collapsed

Originating Location edit blank

Look up Originating Location button

Payment Type edit blank

Look up Payment Type button

Expense Location edit blank

Look up Expense Location button

Credit Card combo box collapsed

Transportation ID edit blank

Look up Transportation ID button

Number of Nights edit blank

Accounting Detail Default View combo box Collapsed collapsed

Expense Type Defaults Grid Action Menu menu button subMenu clickable

Expense Type Defaults : Find button

tab control

Expense Type tab selected 1 of 2

Show all columns graphic button

Expense Type Defaults. Table displays row 1 of 1. table with 2 rows and 5 columns row 1 column 1
Expense Type Sort button

column 2 Payment Type Sort button

column 3 Billing Type Sort button

row 2 * Expense Type column 1

Expense Type: combo box collapsed required

row 2 Payment Type column 2

Payment Type: combo box collapsed

row 2 Billing Type column 3

Billing Type: combo box collapsed

row 2 Add multiple rows column 4 button

Delete row column 5 button

Project Defaults for Expenses Grid Action Menu menu button subMenu clickable

Project Defaults for Expenses : Find button

Project Defaults for Expenses

Show all columns graphic button

Project Defaults for Expenses. Table displays row 1 of 1. table with 2 rows and 10 columns row 1
column 1 Enabled Sort button

column 2 PC Business Unit Sort button

column 3 Project Sort button

column 4 Description Sort button

column 5 Activity Sort button

column 6 Description Sort button

column 7 Source Type Sort button

column 8 Percentage Sort button

row 2 Enabled column 1 Enabled: check box not checked

row 2 PC Business Unit column 2

PC Business Unit: edit blank

Look up PC Business Unit button

row 2 Project column 3

Project: edit blank

Look up Project button

row 2 Activity column 5

Activity: edit blank

Look up Activity button

row 2 Source Type column 7

Source Type: edit blank

Look up Source Type button

row 2 Percentage column 8

Percentage: edit blank

row 2 Add multiple rows column 9 button

Delete row column 10 button

Time Defaults grouping

Country edit blank

Look up Country button

State edit blank

Look up State button

Locality edit blank

Look up Locality button

Billing Type combo box collapsed


Default : radio button checked 1 of 1

Descriptions radio button not checked 1 of 2

Project Defaults for Time Grid Action Menu menu button subMenu clickable

Project Defaults for Time : Find button

Project Defaults for Time

Show all columns  button

Project Defaults for Time. Table displays row 1 of 1. table with 2 rows and 10 columns row 1
column 1 Enabled Sort button

column 2 PC Business Unit Sort button

column 3 Project Sort button

column 4 Description Sort button

column 5 Activity Sort button

column 6 Description Sort button

column 7 Source Type Sort button

column 8 Time Quantity Sort button

row 2 Enabled column 1 Enabled: not checked

row 2 PC Business Unit column 2

PC Business Unit: edit blank

Look up PC Business Unit button

row 2 Project column 3

Project: edit blank

Look up Project button

row 2 Activity column 5

Activity: edit blank

Look up Activity button

row 2 Source Type column 7

Source Type: edit blank

Look up Source Type button

row 2 Time Quantity column 8

Time Quantity: edit blank

row 2 Add multiple rows column 9 button

Delete row column 10 button

Save button



Content is licensed under a Creative Commons Attribution 4.0 International License, unless noted otherwise.

Washington State Board for Community and Technical Colleges