



DATA DICTIONARY

SATELLITE TABLES 2.0

Revisions

| Change reference | Date | Version |
|---|------------|---------|
| Original document – combined individual data dictionaries for all satellite tables. | 07/22/2022 | 1.0 |
| Updated CLASS_ATTRIBUTES ITEM datatype | 11/8/2022 | 1.1 |
| Marked LEGACY_CENSUS_RACE_CD as expired as of 2231 | 05/04/2023 | 1.2 |
| Added the Plan_Attributes table | 9/3/2024 | 2.0 |

Contacts

Data Services

dataservices@sbctc.edu

CONTENTS

| | |
|---|-----------|
| Revisions | 2 |
| Contacts | 2 |
| CLASS_ATTRIBUTES | 4 |
| Table Description | 4 |
| Entity Relationship Diagram | 4 |
| Field Descriptions | 5 |
| STUDENT_GROUPS | 8 |
| Table Description | 8 |
| Entity Relationship Diagram | 8 |
| Field Definitions | 9 |
| STUDENT_ATTRIBUTES | 12 |
| Table Description | 12 |
| Entity Relationship Diagram | 13 |
| Field Descriptions | 14 |
| STUDENT_PLANS | 18 |
| Table Description | 18 |
| Entity Relationship Diagram | 18 |
| Field Descriptions | 19 |
| PLAN_ATTRIBUTES | 27 |
| Table Description | 27 |
| Entity Relationship Diagram | 27 |
| Field Descriptions | 28 |
| STUDENT_RACE | 32 |
| Table Description | 32 |
| Entity Relationship Diagram | 32 |
| Field Descriptions | 33 |
| STUDENT_WAIVERS | 38 |
| Table Description | 38 |
| Entity Relationship Diagram | 39 |
| Field Descriptions | 39 |
| Appendix A: Data Classification Appendix | 44 |

CLASS_ATTRIBUTES

Table Description

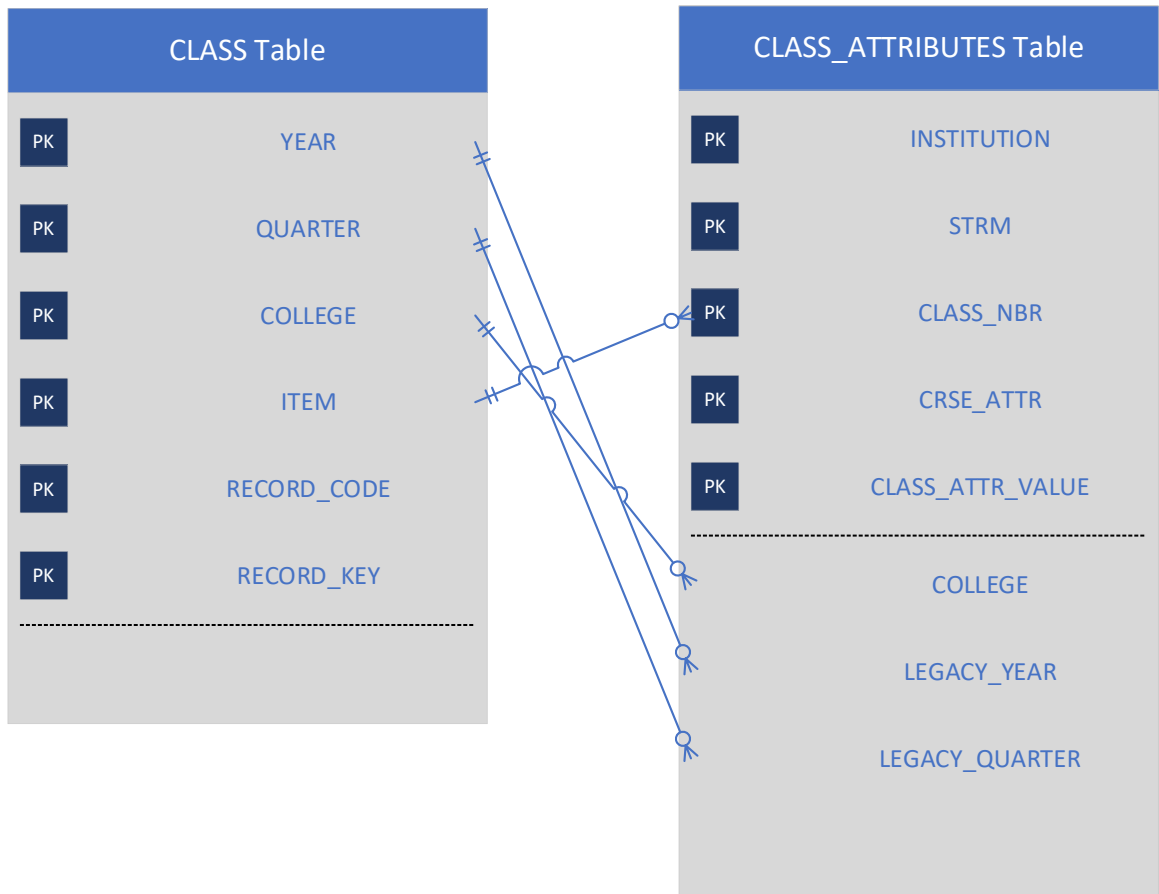
The CLASS_ATTRIBUTES table contains the listing of course attributes associated to each class that was offered during the quarter. Class Attributes that begin with “S” are globally defined by SBCTC. Examples of the “S” Class Attributes are: Funding Source, IBEST and Course Intent.

Class attributes are inherited from the course attribute and are modifiable at the class level.

Entity Relationship Diagram

The Entity Relationship Diagram (ERD) shown below consists only of the key data elements typically used for linking between tables. The full list of data elements are provided in the Field Definitions section for this table.

Each class in the CLASS Table may have zero or more records in the CLASS_ATTRIBUTES Table.



Field Descriptions

INSTITUTION (PK)

Data Type: Char

Size: 5

Definition: The five-digit code used in ctcLink to identify each community or technical college in the state of Washington.

Data Classification: [Category 2](#)

PeopleSoft Source: CS.CLASS_ATTRIBUTE

Lookup/Crosswalk: LOOKUP.DW_REF_ENR.COLLEGE_MASTER

STRM (PK)

Data Type: Char

Size: 4

Definition: A ctcLink variable that indicates the academic year and term. STRM stands for Session Term. The academic year begins with summer quarter and ends with spring quarter. The first character represents the millennium. The second and third characters represent the 2-digit calendar year and the last character represents the term (or quarter).

Data Classification: [Category 2](#)

PeopleSoft Source: CS.CLASS_ATTRIBUTE

Lookup/Crosswalk: LOOKUP.DW_REF_ENR.YRQ_CONVERT

Example Valid Values:

| Values | Value Descriptions |
|--------|---------------------|
| 2197 | Fall Quarter 2019 |
| 2201 | Winter Quarter 2020 |
| 2213 | Spring Quarter 2021 |
| 2225 | Summer Quarter 2022 |

CLASS_NBR (PK)

Data Type: VARCHAR

Size: 38

Definition: A unique identifier of each class section during a given quarter at the specified college.

Data Classification: [Category 2](#)

PeopleSoft Source: CS.CLASS_ATTRIBUTE

CRSE_ATTR (PK)

Data Type: Varchar

Size: 4

Definition: Class Attributes are manually assigned by college staff and designate a characteristic of the class. Class Attributes starting with “S” are created by SBCTC and used for state-level reporting.

Data Classification: [Category 2](#)

PeopleSoft Source: CS.CLASS_ATTRIBUTE

Lookup table: LOOKUP.DW_REF_ENR.CLASS_ATTRIBUTES

CRSE_ATTR_VALUE (PK)

Data Type: Varchar

Size: 10

Definition: The STDNT_ATTR_VALUE provides the discrete activity that qualified the student for service under the program. In the legacy system, the WORK_ATTND field is equivalent in nature.

Data Classification: [Category 2](#)

PeopleSoft Source: CS.CLASS_ATTRIBUTE

Lookup table: LOOKUP.DW_REF_ENR.CLASS_ATTRIBUTES

CRSE_ID

Data Type: Varchar

Size: 6

Definition: The unique identifier that identifies the course in the course catalog.

Data Classification: [Category 2](#)

PeopleSoft Source: CS.CLASS_ATTRIBUTE

CLASS_SECTION

Data Type: Varchar

Size: 4

Definition: Represents the specific offering of the class.

Data Classification: [Category 2](#)

PeopleSoft Source: CS.CLASS_ATTRIBUTE

COLLEGE

Data Type: Char

Size: 3

Definition: A three-digit code used to identify each community or technical college in the state of Washington. The first two-digits represent the district code.

Data Classification: [Category 2](#)

Source: The last three characters of INSTITUTION.

LEGACY_YEAR

Data Type: Char

Size: 3

Definition: A three-character field identifying the academic year. The academic year begins with summer quarter and ends with spring quarter.

Data Classification: [Category 2](#)

Source: Derived from STRM.

Lookup/Crosswalk: LOOKUP.DW_REF_ENR.YRQ_CONVERT

Examples of Valid Values:

| Values | Value Descriptions |
|--------|--------------------|
| 990 | 1999-2000 |
| A01 | 2000-2001 |
| B01 | 2010-2011 |
| C01 | 2020-2021 |

LEGACY_QUARTER

Data Type: Char

Size: 1

Definition: A one-character code identifying the specific quarter of the enrollment. The academic year begins with summer quarter and ends with spring quarter.

Data Classification: [Category 2](#)

Source: Derived from STRM

Lookup/Crosswalk: LOOKUP.DW_REF_ENR.YRQ_CONVERT

Valid Values:

| Values | Value Descriptions |
|--------|--------------------|
| 1 | Summer |
| 2 | Fall |
| 3 | Winter |
| 4 | Spring |

LEGACY_YRQ

Data Type: Char

Size: 4

Definition: The concatenation of YEAR and QUARTER. The first three characters are the YEAR, and the last character is the QUARTER.

Data Classification: [Category 2](#)

Source: Derived from STRM

Lookup/Crosswalk: LOOKUP.DW_REF_ENR.YRQ_CONVERT

STUDENT_GROUPS

Table Description

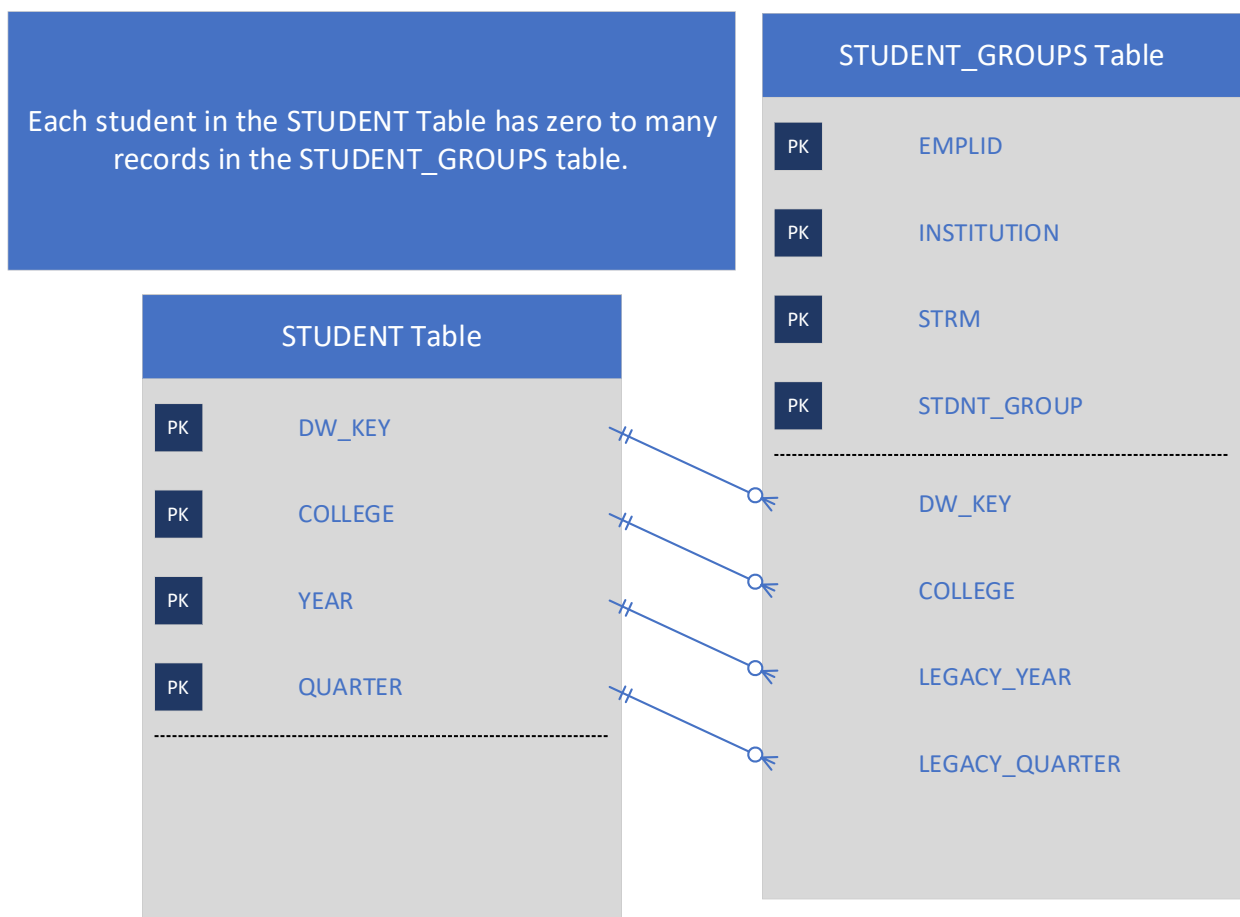
The STUDENT_GROUP table contains the available student group information from ctcLink Campus Solutions for each student enrolled during the term and included in the SBCTC Data Warehouse. This table only contains the system defined student groups, those that begin with “S”.

Student group is a code that identifies a group of students by demographic, program and/or enrollment information. This table contains the ctcLink student group associated to the student where the student group was active as of the college’s quarter end date.

The Data Warehouse process translates the Effective Dated value into a STRM value for snapshot and reporting purposes based on the college’s quarter end date.

Entity Relationship Diagram

The Entity Relationship Diagram (ERD) shown below consists only of the key data elements typically used for linking between tables. The full list of data elements are provided in the Field Definitions section for this table.



Field Definitions

EMPLID (PK)

Data Type: Varchar

Size: 11

Definition: The PeopleSoft unique identifier assigned to each student and employee. The same EMPLID is used across all pillars and all institutions for each student/employee. The same EMPLID is used whether the student is an employee or student or both.

Data Classification: [Category 3](#)

PeopleSoft Source: CS.STDNT_GRP_HIST

INSTITUTION (PK)

Data Type: Char

Size: 5

Definition: The five-digit code used in ctcLink to identify each community or technical college in the state of Washington.

Data Classification: [Category 2](#)

PeopleSoft Source: CS.STDNT_GRP_HIST

Lookup/Crosswalk: LOOKUP.DW_REF_ENR.COLLEGE_MASTER

STRM (PK)

Data Type: CHAR

Size: 4

Definition: A ctcLink variable that indicates the academic year and term. STRM stands for Session Term. The academic year begins with summer quarter and ends with spring quarter. The first character represents the millennium. The second and third characters represent the 2-digit calendar year and the last character represents the term (or quarter).

Data Classification: [Category 2](#)

PeopleSoft Source: CS.STDNT_GRP_HIST

Lookup/Crosswalk: LOOKUP.DW_REF_ENR.YRQ_CONVERT

Example Valid Values:

| Values | Value Descriptions |
|--------|---------------------|
| 2197 | Fall Quarter 2019 |
| 2201 | Winter Quarter 2020 |
| 2213 | Spring Quarter 2021 |
| 2225 | Summer Quarter 2022 |

STDNT_GROUP (PK)

Data Type: Varchar

Size: 4

Definition: A four-character code identifying a group of students by demographic, program and/or enrollment information for reporting purposes. Student Groups starting with “S” are created by SBCTC and used for state-level reporting. Other student groups are “manually assigned” by college staff.

See the [SBCTC Coding Manual](#) for additional information related to the “S” student groups including their definition and indication of mass assigned or manually assigned.

Data Classification: [Category 3](#)

PeopleSoft Source: CS.STDNT_GRP_HIST

Lookup/Crosswalk: DW_REF_ENR.STUDENT_GROUPS

DW_KEY

Data Type: Varchar

Size: 10

Definition: The Data Warehouse system-wide unique identifier assigned to each student. This field is used to track students longitudinally across all colleges. This field is used across all student related tables in the Data Warehouse and *is not college specific*.

Data Classification: [Category 3](#)

PeopleSoft Source: DW_KEY is retrieved based on available student identifiers in the following order: CS.EMPLID, SID, and SSN. If no identifier is found to exist in the Data Warehouse, a new DW_KEY is created.

COLLEGE

Data Type: Char

Size: 3

Definition: A three-digit code used to identify each community or technical college in the state of Washington. College codes begin with the two-digit district code.

Data Classification: [Category 2](#)

Legacy Source: SMIS.COLLEGE

PeopleSoft Source: The last three characters of CS.INSTITUTION.

Lookup/Crosswalk: LOOKUP.DW_REF_ENR.COLLEGE_MASTER

LEGACY_YEAR

Data Type: Char

Size: 3

Definition: A three-character field identifying the academic year. The academic year begins with summer quarter and ends with spring quarter.

Data Classification: [Category 2](#)

PeopleSoft Source: Derived from STRM

Lookup/Crosswalk: LOOKUP.DW_REF_ENR.YRQ_CONVERT

Examples of Valid Values:

| Values | Value Descriptions |
|--------|--------------------|
| 990 | 1999-2000 |
| A01 | 2000-2001 |
| B01 | 2010-2011 |
| C01 | 2020-2021 |

LEGACY_QUARTER

Data Type: Char

Size: 1

Definition: A one-character code identifying the specific quarter of the enrollment. The academic year begins with summer quarter and ends with spring quarter.

Data Classification: [Category 2](#)

PeopleSoft Source: Derived from STRM

Lookup/Crosswalk: LOOKUP.DW_REF_ENR.YRQ_CONVERT

Valid Values:

| Values | Value Descriptions |
|--------|--------------------|
| 1 | Summer |
| 2 | Fall |
| 3 | Winter |
| 4 | Spring |

LEGACY_YRQ

Data Type: Char

Size: 4

Definition: The concatenation of YEAR and QUARTER. The first three characters are the YEAR, and the last character is the QUARTER.

Data Classification: [Category 2](#)

PeopleSoft Source: Derived from STRM

Lookup/Crosswalk: LOOKUP.DW_REF_ENR.YRQ_CONVERT

STUDENT_ATTRIBUTES

Table Description

The STUDENT_ATTRIBUTES table contains the listing of student attributes that designate a student's type of participation in a particular program for a student in ctcLink for a given term. The attribute is then used to set a Student Group value.

The STUDENT_ATTRIBUTES table contains the available student attribute information from ctcLink Campus Solutions for each student enrolled during the term and included in the SBCTC Data Warehouse. This table only contains the system defined student attributes, those that begin with "S".

Student Groups may or may not have an associated Student Attribute value. Only certain programs are assigned attributes and include: Worker Retraining, WorkFirst, Early Achievers Grant and Apprenticeships.

This table contains the ctcLink student attribute associated to the student's term activated plan stack where the student attribute was active as of the college's quarter end date.

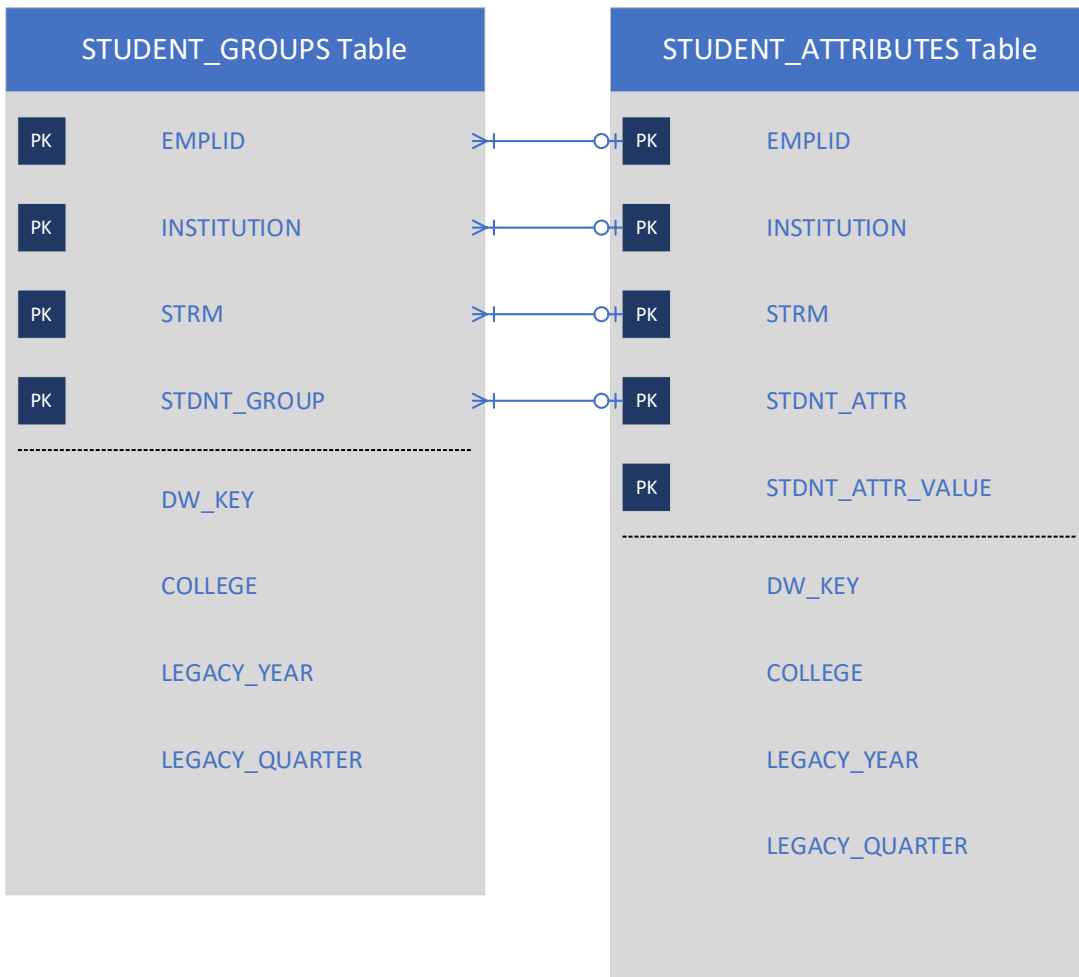
The Data Warehouse process translates the Effective Dated value into a STRM value for snapshot and reporting purposes based on the college's quarter end date.

Entity Relationship Diagram

The Entity Relationship Diagram (ERD) shown below consists only of the key data elements typically used for linking between tables. The full list of data elements are provided in the Field Definitions section for this table.

Student Groups may or may not have an associated Student Attribute value. Only certain programs are assigned attributes and include: Worker Retraining, WorkFirst, Early Achievers Grant and Apprenticeships.

Each student in the STUDENT_GROUPS Table may have zero or one record in the STUDENT_ATTRIBUTES Table for the associated STDNT_GROUP code.



Field Descriptions

EMPLID (PK)

Data Type: Varchar

Size: 11

Definition: The PeopleSoft unique identifier assigned to each student and employee. The same EMPLID is used across all pillars and all institutions for each student/employee. The same EMPLID is used whether the student is an employee or student or both.

Data Classification: [Category 3](#)

PeopleSoft Source: CS.STDNT_ATTR_DTL

INSTITUTION (PK)

Data Type: Char

Size: 5

Definition: The five-digit code used in ctcLink to identify each community or technical college in the state of Washington.

Data Classification: [Category 2](#)

PeopleSoft Source: CS.STDNT_ATTR_DTL

Lookup/Crosswalk: LOOKUP.DW_REF_ENR.COLLEGE_MASTER

STRM (PK)

Data Type: Char

Size: 4

Definition: A ctcLink variable that indicates the academic year and term. STRM stands for Session Term. The academic year begins with summer quarter and ends with spring quarter. The first character represents the millennium. The second and third characters represent the 2-digit calendar year and the last character represents the term (or quarter).

Data Classification: [Category 2](#)

PeopleSoft Source: Derived at the time of snapshot using effective dating of the source record.

Lookup/Crosswalk: LOOKUP.DW_REF_ENR.YRQ_CONVERT

Example Valid Values:

| Values | Value Descriptions |
|--------|---------------------|
| 2197 | Fall Quarter 2019 |
| 2201 | Winter Quarter 2020 |
| 2213 | Spring Quarter 2021 |
| 2225 | Summer Quarter 2022 |

STDNT_ATTR (PK)

Data Type: Varchar

Size: 4

Definition: Student Attributes are manually assigned along with a Student Attribute Value by college staff and designate a student's participation in a particular program for reporting purposes. Student Attributes starting with "S" are created by SBCTC and used for state-level reporting.

Data Classification: [Category 2](#)

PeopleSoft Source: CS.STDNT_ATTR_DTL

Lookup table: LOOKUP.DW_REF_ENR.STUDENT_ATTRIBUTES

STDNT_ATTR_VALUE (PK)

Data Type: Varchar

Size: 10

Definition: The STDNT_ATTR_VALUE provides the discrete activity that qualified the student for service under the program. In the legacy system, the WORK_ATTND field is equivalent in nature.

Data Classification: [Category 2](#)

PeopleSoft Source: CS.STDNT_ATTR_DTL

Lookup table: LOOKUP.DW_REF_ENR.STUDENT_ATTRIBUTES

STDNT_CAR_NBR

Data Type: Integer

Definition: Represents the term activated Plan Stack.

Data Classification: [Category 2](#)

PeopleSoft Source: CS.STDNT_ATTR_DTL

DW_KEY

Data Type: Varchar

Size: 10

Definition: The Data Warehouse system-wide unique identifier assigned to each student. This field is used to track students longitudinally across all colleges. This field is used across all student related tables in the Data Warehouse and *is not college specific*.

Data Classification: [Category 3](#)

Source: DW_KEY is retrieved based on available student identifiers in the following order: CS.EMPLID, SID, and SSN. If no identifier is found to exist in the Data Warehouse, a new DW_KEY is created.

Examples of Use: A system identifier and the primary key on many tables. Used for system unduplicated headcounts.

COLLEGE

Data Type: Char

Size: 3

Definition: A three-digit code used to identify each community or technical college in the state of Washington. The first two-digits represent the district code.

Data Classification: [Category 2](#)

Source: The last three characters of CS.INSTITUTION.

Lookup/Crosswalk: LOOKUP.DW_REF_ENR.COLLEGE_MASTER

LEGACY_YEAR

Data Type: Char

Size: 3

Definition: A three-character field identifying the academic year. The academic year begins with summer quarter and ends with spring quarter.

Data Classification: [Category 2](#)

Source: Derived from STRM.

Lookup/Crosswalk: LOOKUP.DW_REF_ENR.YRQ_CONVERT

Examples of Valid Values:

| Values | Value Descriptions |
|--------|--------------------|
| 990 | 1999-2000 |
| A01 | 2000-2001 |
| B01 | 2010-2011 |
| C01 | 2020-2021 |

LEGACY_QUARTER

Data Type: Char

Size: 1

Definition: A one-character code identifying the specific quarter of the enrollment. The academic year begins with summer quarter and ends with spring quarter.

Data Classification: [Category 2](#)

Source: Derived from STRM

Lookup/Crosswalk: LOOKUP.DW_REF_ENR.YRQ_CONVERT

Valid Values:

| Values | Value Descriptions |
|--------|--------------------|
| 1 | Summer |
| 2 | Fall |
| 3 | Winter |
| 4 | Spring |

LEGACY_YRQ

Data Type: Char

Size: 4

Definition: The concatenation of YEAR and QUARTER. The first three characters are the YEAR, and the last character is the QUARTER.

Data Classification: [Category 2](#)

Source: Derived from STRM

Lookup/Crosswalk: LOOKUP.DW_REF_ENR.YRQ_CONVERT

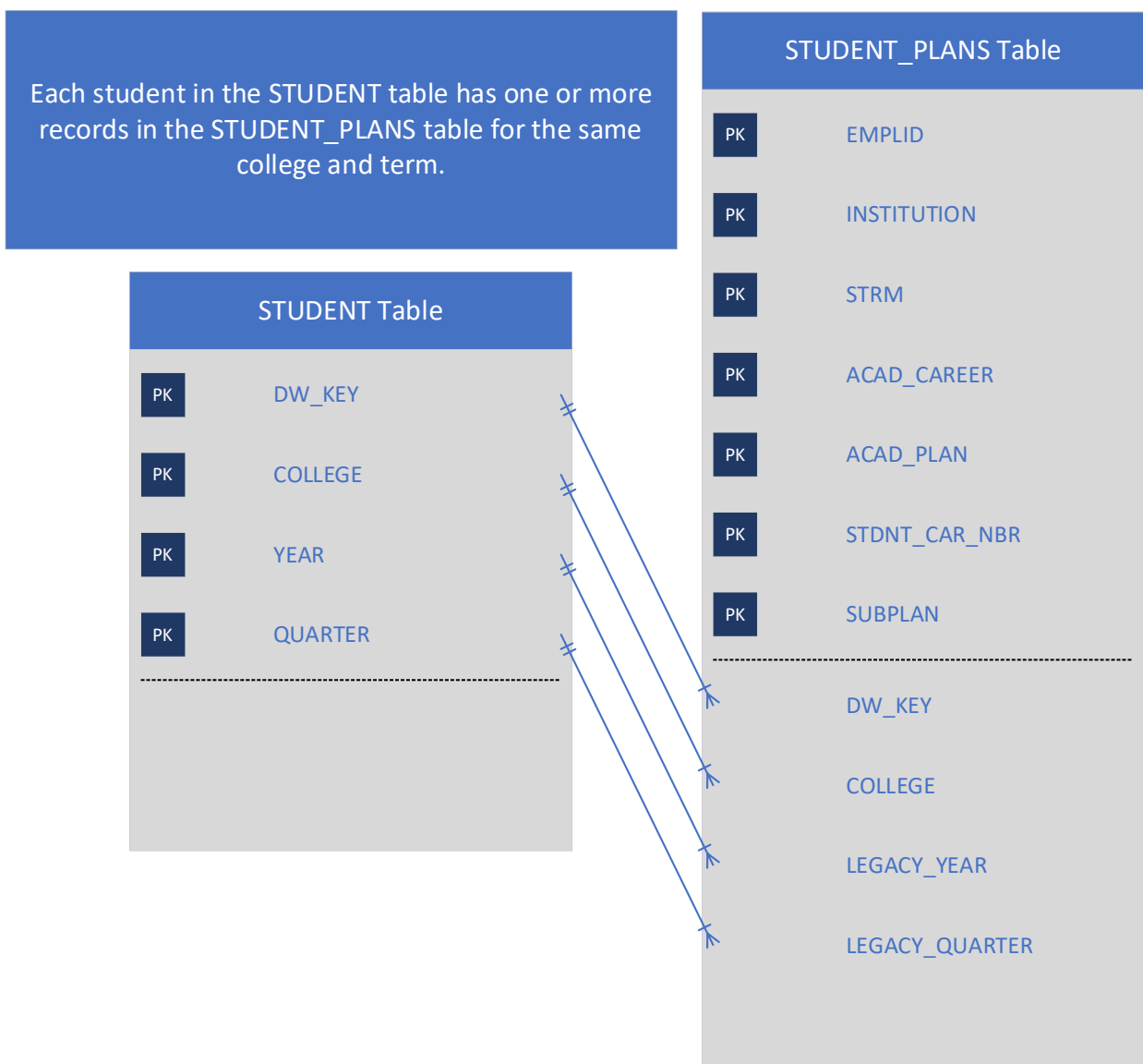
STUDENT_PLANS

Table Description

The STUDENT_PLANS table contains the listing of all term activated plan codes for a student in ctcLink for a given term. The table also provides the cross walk of plan code to INTENT code. See the STUDENT table data dictionary for more information on INTENT codes.

Entity Relationship Diagram

The Entity Relationship Diagram (ERD) shown below consists only of the key data elements typically used for linking between tables. The full list of data elements are provided in the Field Definitions section for this table.



Field Descriptions

EMPLID (PK)

Data Type: Varchar

Size: 11

Definition: The PeopleSoft unique identifier assigned to each student and employee. The same EMPLID is used across all pillars and all institutions for each student/employee. The same EMPLID is used whether the student is an employee or student or both.

Data Classification: [Category 3](#)

PeopleSoft Source: CS.PS_ACAD_PLAN_VW

INSTITUTION (PK)

Data Type: Char

Size: 5

Definition: The five-digit code used in ctcLink to identify each community or technical college in the state of Washington.

Data Classification: [Category 2](#)

PeopleSoft Source: CS.PS_ACAD_PLAN_VW

Lookup/Crosswalk: LOOKUP.DW_REF_ENR.COLLEGE_MASTER

STRM (PK)

Data Type: Char

Size: 4

Definition: A ctcLink variable that indicates the academic year and term. STRM stands for Session Term. The academic year begins with summer quarter and ends with spring quarter. The first character represents the millennium. The second and third characters represent the 2-digit calendar year and the last character represents the term (or quarter).

Data Classification: [Category 2](#)

PeopleSoft Source: CS.PS_ACAD_PLAN_VW

Lookup/Crosswalk: LOOKUP.DW_REF_ENR.YRQ_CONVERT

Example Valid Values:

| Values | Value Descriptions |
|--------|---------------------|
| 2197 | Fall Quarter 2019 |
| 2201 | Winter Quarter 2020 |
| 2213 | Spring Quarter 2021 |
| 2225 | Summer Quarter 2022 |

ACAD_CAREER (PK)

Data Type: Varchar

Size: 4

Definition: The student's academic career associated to this plan code.

Data Classification: [Category 2](#)

PeopleSoft Source: CS.PS_ACAD_PLAN_VW

ACAD_PLAN (PK)

Data Type: Varchar

Size: 10

Definition: The student's term activated academic plan for the specified quarter. The coding schema for plan codes is as follows:

--- / -- / ---

CIP Acronym / Program Acronym / Degree Type

Each student must be term activated in a Plan Stack consisting of one or more Plan Codes. The plan codes are cross walked to student INTENT codes in the SBCTC Data Warehouse.

Data Classification: [Category 2](#)

PeopleSoft Source: CS.PS_ACAD_PLAN_VW

STDNT_CAR_NBR (PK)

Data Type: Numeric

Size: 38,0

Definition: Represents the term activated Plan Stack.

Data Classification: [Category 2](#)

PeopleSoft Source: CS.PS_ACAD_PLAN_VW

SUBPLAN (PK)

Data Type: Varchar

Size: 50

Definition: The subplan attached to a students active plan stack for a given quarter. Students can have more than one subplan active.

History: N/A

Data Classification: [Category 2](#)

PeopleSoft Source: SYSADM_CS.PS_ACAD_SUBPLAN, SYSADM_CS.PS_ACAD_SUBPLN_TBL.

Lookup Table: LOOKUP.DW_REF_ENR.PLAN_CODES

ACAD_PROG

Data Type: Varchar

Size: 5

Definition: The student's academic program associated to this plan code.

Data Classification: [Category 2](#)

PeopleSoft Source: CS.PS_ACAD_PLAN_VW

Valid Values:

| ACAD_PROG | ACAD_CAREER | Description |
|-----------|-------------|------------------------|
| CNTED | CNED | Continuing Education |
| ACADM | UGRD | Academic |
| BCHLR | UGRD | Baccalaureate |
| NOAWS | UGRD | Non-Award Seeking |
| PRFTC | UGRD | Professional Technical |
| TRNST | UGRD | Transitional Studies |

CIP_CODE

Data Type: Char

Size: 6

Definition: A six-digit code identifying the student's major. CIP codes (Classification of Instructional Programs) are created by the US Department of Education to describe the subject area of courses and major areas of study.

This value does not include the decimal in the third character.

Data Classification: [Category 2](#)

PeopleSoft Source: CS.PS_ACAD_PLAN_TBL

Examples of Use: The CIP Code can be linked to the CIP Table to provide an English language translation or to aggregate student plans. CIP codes can be categorized in several ways.

Lookup/Crosswalk: LOOKUP.DW_REF_ENR.CIP

DESCR

Data Type: Varchar

Size: 30

Definition: The description of the plan code, typically the name of the program.

Data Classification: [Category 2](#)

PeopleSoft Source: CS.PS_ACAD_PLAN_TBL

INTENT

Data Type: Varchar

Size: 1

Definition: A one-character code representing the student's intent for enrolling as coded by the colleges. Student Intent codes are an important aspect of the SBCTC Data Warehouse, allowing for the aggregation of students by their purpose for attending. Student Intent coding differentiates students who are award-seeking from students who are only taking a few courses, as well as differentiating transfer students from those seeking a professional/technical credential. These distinctions are important for establishing cohorts used in federal reporting and for funding purposes. The new software system, PeopleSoft, does not include a Student Intent data element; however, it has been determined that the SBCTC Data Warehouse will continue to populate this field because of its usefulness in grouping students into categories. PeopleSoft Plan Codes will be cross-walked to the appropriate Intent code.

Data Classification: [Category 3](#)

PeopleSoft Source: Derived from the student's PLAN_CODE, CAREER (for Intent W) or CIP code of enrollments (for Intent D).

Examples of Use: Widely used data element. Student Achievement, DLOA and Perkins reporting.

Lookup/Crosswalk: LOOKUP.DW_REF_ENR.INTENT

Valid Values:

| Code | Intent | Descriptions |
|------|--|--|
| A | Academic Non-Transfer Degree Program | Students enrolled in a degree program not designed to transfer to a four year university. These are students who are pursuing a general studies degree coded as Exit code 1 and CIP code 24.0101. |
| B | Academic Transfer Program | Students enrolled in the DTA/MRP or local agreement programs intended for transfer to a four year university. |
| D | Basic Education for Adults | Non-award seeking students enrolled in adult education including ESL, ABE, HSE, HSC. Students who are enrolled in a certificate or degree program and taking adult education to prepare for college level work should be coded with the INTENT code that best represents their purpose for attending. |
| F | Professional/Technical Program | Students who are enrolled in a professional/technical program. This includes Apprenticeship students who are award seeking. Professional/technical programs are also commonly referred to as vocational or workforce programs. For legacy, a valid professional/technical EPC is required. |
| G | Professional/Technical Program Applicant (preparatory coursework only) | Student has no interest in preparing for multiple degree pathways and does not intend to remain at the institution if they do not get accepted into the selective admissions program. At a time when the student is no longer in prerequisite status (acceptance into selective admissions for example), |

| Code | Intent | Descriptions |
|------|--------------------------------|---|
| | | the intent code should adjust accordingly. For legacy, a valid professional/technical EPC is required. |
| H | Apprenticeship Program | Students enrolled in an apprenticeship program not seeking an award from the college but an L&I journeyman card. For legacy, a valid professional/technical EPC is required. |
| I | Applied Baccalaureate Program | Students matriculated in a baccalaureate program. For legacy, a valid professional/technical EPC is required. |
| J | Upgrading Job Skills Courses | Students enrolled for the purpose of upgrading their job skills by taking one or more courses. These students are not seeking a certificate or degree completion. |
| L | Non-Award Seeking Student | Students taking one or more classes but not seeking a certificate or degree. This category is also used for dual enrollment students such as non-award seeking Running Start and College in the High School. |
| W | Exclusive Continuing Education | Used for PeopleSoft Colleges Only. Students enrolled exclusively in non-credit bearing continuing education courses. This includes students who are exclusively enrolled in the PeopleSoft Continuing Education career with a Plan Code of "CED". |
| Y | None of the Above | Colleges should strive to assign the appropriate INTENT code. Null or Blank INTENT codes are set to "Y" in the SMIS extracts during MIS finals. SMS is not updated. |

Student Plan Code to Intent Code Mapping

| Intent Code | PeopleSoft Criteria |
|-------------|--|
| D | DEGREE = HSC or ACAD_PLAN = HSD, HSE, ESL or ABE |
| G | ACAD_PLAN ends in PRQ |
| I | DEGREE = BAA, BAS, BAT |
| H | Member of SAPR Student Group |
| F | DEGREE = APT, AAS, C01, C20, C45, C90 or ACAD_PLAN = RENDTAA |
| B | DEGREE = AA, AS, DTA/MRP |
| A | DEGREE = AGS |

| Intent Code | PeopleSoft Criteria |
|-------------|------------------------|
| J | ACAD_PLAN = NASJU |
| L | ACAD_PLAN = NASOT, TSP |
| W | ACAD_PLAN = CED only |
| Y | All others |

PRIORITY

Data Type: Varchar

Size: 2

Definition: Because students may only have one INTENT code per institution per term, if they are coded to more than one Plan Code, we must prioritize the INTENT codes.

Data Classification: [Category 2](#)

Valid Values:

| Priority | Leg INTENT | Descriptions |
|----------|------------|---|
| 1 | D | High School Diploma/GED Certificate (pre-college courses) |
| 2 | I | Applied Baccalaureate Program |
| 3 | H | Apprenticeship |
| 4 | F | Workforce Program |
| 5 | G | Workforce Program Applicant |
| 6 | B | Academic Transfer |
| 7 | A | Academic Non-Transfer Degree |
| 8 | X | Undecided |
| 9 | J | Upgrading Job Skills |
| 10 | K | Vocational Home and Family Life (Educational Program Code required) |
| 11 | L | General Studies (Non-Degree/Certificate) |
| 12 | W | Exclusive Continuing Education |

DEGREE

Data Type: Varchar

Size: 16

Definition: The last three characters of the plan code indicating the degree or certificate level of the Plan Code. The DEGREE field is used to map to EXIT_CD in the SBCTC Data Warehouse Completions table. This crosswalk of DEGREE to EXIT_CD can be found in the Completions data dictionary.

If the DEGREE field value is null, the plan code does not result in a credential.

Data Classification: [Category 2](#)

PeopleSoft Source: CS.PS_ACAD_PLAN_TBL

TRNSCR_DESCR

Data Type: Varchar

Size: 100

Definition: The description of the Plan Code as shown on the student's transcript.

Data Classification: [Category 2](#)

PeopleSoft Source: CS.PS_ACAD_PLAN_TBL

SUBPLAN_DESCR

Data Type: Varchar

Size: 255

Definition: Description of active subplan.

Data Classification: [Category 2](#)

PeopleSoft Source: SYSADM_CS.PS_ACAD_SUBPLN_TBL

DW_KEY

Data Type: Varchar

Size: 10

Definition: The Data Warehouse system-wide unique identifier assigned to each student. This field is used to track students longitudinally across all colleges. This field is used across all student related tables in the Data Warehouse and *is not college specific*.

Data Classification: [Category 3](#)

PeopleSoft Source: DW_KEY is retrieved based on available student identifiers in the following order: CS.EMPLID, SID, and SSN. If no identifier is found to exist in the Data Warehouse, a new DW_KEY is created.

Examples of Use: A system identifier and the primary key on many tables. Used for system unduplicated headcounts.

COLLEGE

Data Type: Char

Size: 3

Definition: A three-digit code used to identify each community or technical college in the state of Washington. College codes begin with the two-digit district code.

History: Pierce District split into two colleges in 2001-02.

Data Classification: [Category 2](#)

PeopleSoft Source: Derived from INSTITUTION

Lookup/Crosswalk: LOOKUP.DW_REF_ENR.COLLEGE_MASTER

LEGACY_YEAR

Data Type: Char

Size: 3

Definition: A three-character field identifying the academic year. The academic year begins with summer quarter and ends with spring quarter.

Data Classification: [Category 2](#)

PeopleSoft Source: Derived from STRM

Lookup/Crosswalk: LOOKUP.DW_REF_ENR.YRQ_CONVERT

Examples of Valid Values:

| Values | Value Descriptions |
|--------|--------------------|
| 990 | 1999-2000 |
| A01 | 2000-2001 |
| B01 | 2010-2011 |
| C01 | 2020-2021 |

LEGACY_QUARTER

Data Type: Char

Size: 1

Definition: A one-character code identifying the specific quarter of the enrollment. The academic year begins with summer quarter and ends with spring quarter.

Data Classification: [Category 2](#)

PeopleSoft Source: Derived from STRM

Lookup/Crosswalk: LOOKUP.DW_REF_ENR.YRQ_CONVERT

Valid Values:

| Values | Value Descriptions |
|--------|--------------------|
| 1 | Summer |
| 2 | Fall |
| 3 | Winter |
| 4 | Spring |

LEGACY_YRQ

Data Type: Char

Size: 4

Definition: The concatenation of YEAR and QUARTER. The first three characters are the YEAR, and the last character is the QUARTER.

Data Classification: [Category 2](#)

PeopleSoft Source: Derived from STRM

Lookup/Crosswalk: LOOKUP.DW_REF_ENR.YRQ_CONVERT

PLAN_ATTRIBUTES

Table Description

The PLAN_ATTRIBUTES table contains additional characteristics associated to some Plan Codes, primarily the attributes that are related to Apprenticeship or Special Funded Programs such as Aerospace 1000 and Career Launch. The information in this table is not student specific.

Entity Relationship Diagram

The Entity Relationship Diagram (ERD) shown below consists only of the key data elements typically used for linking between tables. The full list of data elements are provided in the Field Definitions section for this table.



Field Descriptions

INSTITUTION (PK)

Data Type: Char

Size: 5

Definition: The five-digit code used in ctcLink to identify each community or technical college in the state of Washington.

Data Classification: [Category 2](#)

PeopleSoft Source: CS.PS_ACAD_PLAN_CAF

Lookup/Crosswalk: LOOKUP.DW_REF_ENR.COLLEGE_MASTER

STRM (PK)

Data Type: Char

Size: 4

Definition: A ctcLink variable that indicates the academic year and term. STRM stands for Session Term. The academic year begins with summer quarter and ends with spring quarter. The first character represents the millennium. The second and third characters represent the 2-digit calendar year and the last character represents the term (or quarter).

Data Classification: [Category 2](#)

PeopleSoft Source: CS.PS_ACAD_PLAN_CAF

Lookup/Crosswalk: LOOKUP.DW_REF_ENR.YRQ_CONVERT

Example Valid Values:

| Values | Value Descriptions |
|--------|---------------------|
| 2197 | Fall Quarter 2019 |
| 2201 | Winter Quarter 2020 |
| 2213 | Spring Quarter 2021 |
| 2225 | Summer Quarter 2022 |

ACAD_PLAN (PK)

Data Type: Varchar

Size: 10

Definition: The student's term activated academic plan for the specified quarter. The coding schema for plan codes is as follows:

--- / -- / ---

CIP Acronym / Program Acronym / Degree Type

Each student must be term activated in a Plan Stack consisting of one or more Plan Codes. The plan codes are cross walked to student INTENT codes in the SBCTC Data Warehouse.

Data Classification: [Category 2](#)

PeopleSoft Source: CS.PS_ACAD_PLAN_CAF

PLAN_ATTRIBUTE (PK)

Data Type: Varchar

Size: 20

Definition: Identifies a grouping of special characteristics of the ACAD_PLAN such as the type of Apprenticeship program. Not all ACAD_PLAN codes are included in this table, only those that are associated with a special characteristic.

Data Classification: [Category 3](#)

PeopleSoft Source: CS.PS_ACAD_PLAN_CAF

Examples of Use: Used to track Apprenticeship enrollments and special funded programs such as Career Launch and Aerospace 1000.

Valid Values:

| Values | Value Description |
|--------------------|---|
| CTC_APPRENTICESHIP | Apprenticeship Program |
| CTC_APPR_SPONSOR | Apprenticeship Sponsor |
| CTC_PROGRAM_TYPE | Prof/Tech Program Type |
| CTC_PRIMARY_PLN_CD | Prof/Tech Primary Plan Code for Optional Programs |
| CTC_CREDIT_VALUE | Approved credits required |
| CTC_SPEC_PROG_FUND | Special Funded Program |

ATTRIBUTE_VALUE

Data Type: Varchar

Size: 20

Definition: Identifies a specific attribute within the PLAN_ATTRIBUTE. For example, the CTC_APPRENTICESHIP Plan Attribute includes two values, one to indicate a State Apprenticeship program and one to indicate a Federal Apprenticeship program.

Data Classification: [Category 3](#)

PeopleSoft Source: CS.PS_ACAD_PLAN_CAF

Examples of Use: Used to track Apprenticeship enrollments and special funded programs such as Career Launch and Aerospace 1000.

Valid Values for Designated Plan Attributes:

| Plan Attribute | Attribute Value | Attribute Value Description |
|--------------------|-----------------|--|
| CTC_APPRENTICESHIP | FEDERAL | A federal apprenticeship program |
| CTC_APPRENTICESHIP | STATE | A Washington state registered apprenticeship program |
| CTC_PROGRAM_TYPE | PRIMARY | The primary Prof/Tech program |

| Plan Attribute | Attribute Value | Attribute Value Description |
|--------------------|--------------------|---|
| CTC_PROGRAM_TYPE | OPTION | An optional Prof/Tech program |
| CTC_PROGRAM_TYPE | SHORTTERM | Stand alone short-term certificate |
| CTC_PRIMARY_PLN_CD | An ACAD_PLAN value | The primary Prof/Tech program for optional programs |
| CTC_SPEC_PROG_FUND | AERO_1000 | Aerospace 1000 funded program with permanent funding |
| CTC_SPEC_PROG_FUND | AERO_1000_PROB | Aerospace 1000 funded program with probationary funding |
| CTC_SPEC_PROG_FUND | CAREER_LAUNCH | Career Launch funded program with permanent funding |
| CTC_SPEC_PROG_FUND | CAREER_LAUNCH_PROB | Career Launch funded program with probationary funding |
| CTC_SPEC_PROG_FUND | AERO_APPRENT | Aerospace Apprenticeship program with permanent funding |

COLLEGE

Data Type: Char

Size: 3

Definition: A three-digit code used to identify each community or technical college in the state of Washington. College codes begin with the two-digit district code.

History: Pierce District split into two colleges in 2001-02.

Data Classification: [Category 2](#)

PeopleSoft Source: Derived from INSTITUTION

Lookup/Crosswalk: LOOKUP.DW_REF_ENR.COLLEGE_MASTER

LEGACY_YEAR

Data Type: Char

Size: 3

Definition: A three-character field identifying the academic year. The academic year begins with summer quarter and ends with spring quarter.

Data Classification: [Category 2](#)

PeopleSoft Source: Derived from STRM

Lookup/Crosswalk: LOOKUP.DW_REF_ENR.YRQ_CONVERT

Examples of Valid Values:

| Values | Value Descriptions |
|--------|--------------------|
| 990 | 1999-2000 |
| A01 | 2000-2001 |

| Values | Value Descriptions |
|--------|--------------------|
| B01 | 2010-2011 |
| C01 | 2020-2021 |

LEGACY_QUARTER

Data Type: Char

Size: 1

Definition: A one-character code identifying the specific quarter of the enrollment. The academic year begins with summer quarter and ends with spring quarter.

Data Classification: [Category 2](#)

PeopleSoft Source: Derived from STRM

Lookup/Crosswalk: LOOKUP.DW_REF_ENR.YRQ_CONVERT

Valid Values:

| Values | Value Descriptions |
|--------|--------------------|
| 1 | Summer |
| 2 | Fall |
| 3 | Winter |
| 4 | Spring |

LEGACY_YRQ

Data Type: Char

Size: 4

Definition: The concatenation of YEAR and QUARTER. The first three characters are the YEAR, and the last character is the QUARTER.

Data Classification: [Category 2](#)

PeopleSoft Source: Derived from STRM

Lookup/Crosswalk: LOOKUP.DW_REF_ENR.YRQ_CONVERT

STUDENT_RACE

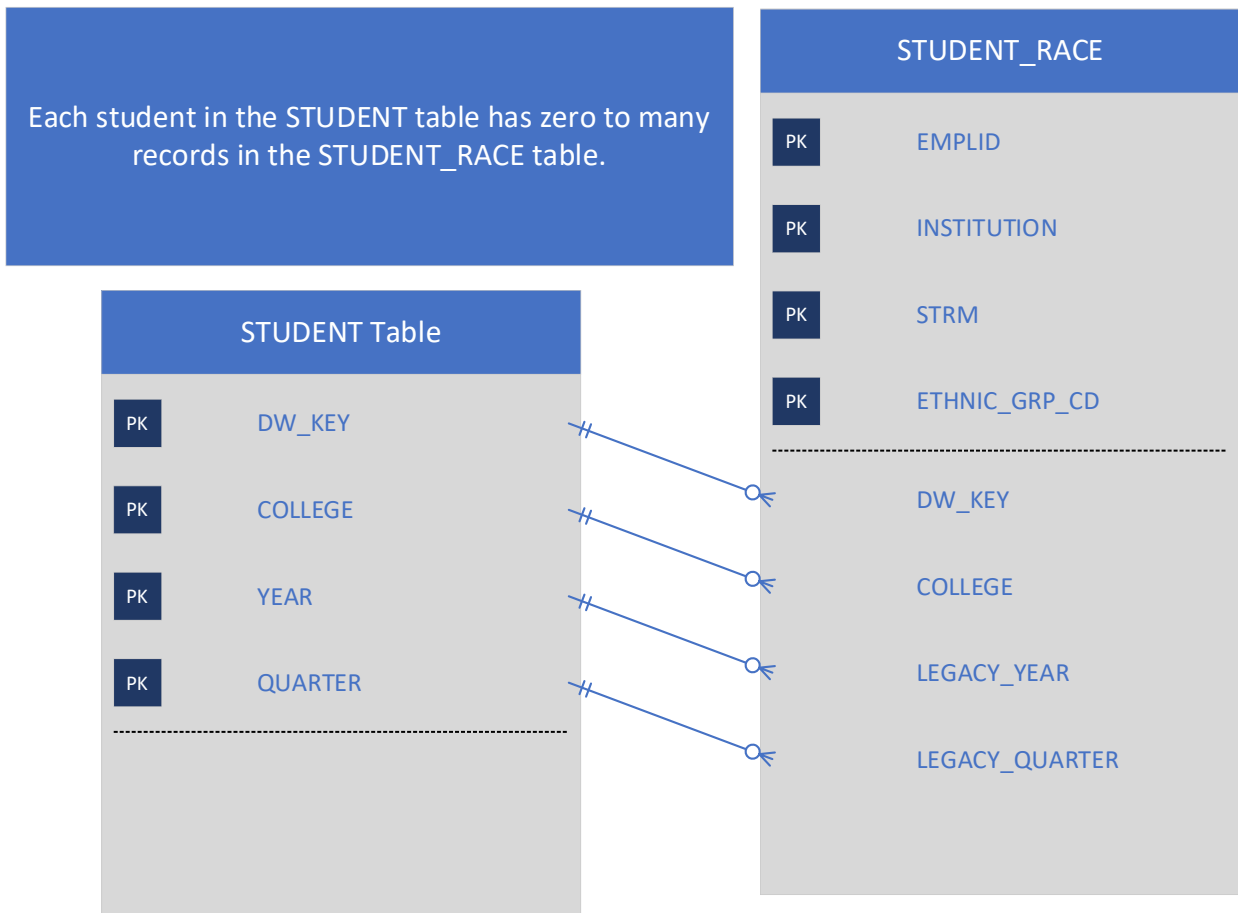
Table Description

The STUDENT_RACE table contains the available race and ethnicity information from ctcLink Campus Solutions for each student enrolled during the term and included in the SBCTC Data Warehouse.

This table contains the ctcLink race/ethnicity values associated to the student as well as the crosswalk to the legacy race/ethnicity coding schema.

Entity Relationship Diagram

The Entity Relationship Diagram (ERD) shown below consists only of the key data elements typically used for linking between tables. The full list of data elements are provided in the Field Definitions section for this table.



Field Descriptions

EMPLID (PK)

Data Type: Varchar

Size: 11

Definition: The PeopleSoft unique identifier assigned to each student and employee. The same EMPLID is used across all pillars and all institutions for each student/employee. The same EMPLID is used whether the student is an employee or student or both.

Data Classification: [Category 3](#)

PeopleSoft Source CS.DIVERS_ETHNIC

INSTITUTION (PK)

Data Type: Char

Size: 5

Definition: The five-digit code used in ctcLink to identify each community or technical college in the state of Washington.

Data Classification: [Category 2](#)

PeopleSoft Source CS.DIVERS_ETHNIC

Lookup/Crosswalk: LOOKUP.DW_REF_ENR.COLLEGE_MASTER

STRM (PK)

Data Type: Char

Size: 4

Definition: A ctcLink variable that indicates the academic year and term. STRM stands for Session Term. The academic year begins with summer quarter and ends with spring quarter. The first character represents the millennium. The second and third characters represent the 2-digit calendar year and the last character represents the term (or quarter).

Data Classification: [Category 2](#)

PeopleSoft Source: Derived based on the snapshot timing and effective dating.

Lookup/Crosswalk: LOOKUP.DW_REF_ENR.YRQ_CONVERT

Example Valid Values:

| Values | Value Descriptions |
|--------|---------------------|
| 2197 | Fall Quarter 2019 |
| 2201 | Winter Quarter 2020 |
| 2213 | Spring Quarter 2021 |
| 2225 | Summer Quarter 2022 |

ETHNIC_GRP_CD (PK)

Data Type: Varchar

Size: 8

Definition: The student's reported ethnic background. The student can select any number of ethnic background codes. Each ethnic background code is mapped to a race code for aggregated reporting.

Data Classification: [Category 2](#)

PeopleSoft Source: CS.DIVERS_ETHNIC

Lookup/Crosswalk: LOOKUP.DW_REF_ENR.ETHNIC_GRP_CODES

ETHNIC_GROUP

Data Type: Char

Size: 1

Definition: The student's race grouping. Each ETHNIC_GRP_CD is rolled up to a higher level grouping for reporting purposes.

Data Classification: [Category 2](#)

PeopleSoft Source: CS.DIVERS_ETHNIC

Lookup/Crosswalk: LOOKUP.DW_REF_ENR.RACE_CODES_PS

Valid Values:

| VALUE | DESCRIPTION |
|-------|--------------------------------|
| 1 | White |
| 2 | Black/African American |
| 3 | Hispanic/Latino |
| 4 | Asian |
| 5 | American Indian/Alaska Native |
| 6 | Not Specified |
| 7 | Native Hawaiian/Oth Pac Island |

PRIMARY_INDICATOR

Data Type: Varchar

Size: 1

Definition: Indicates if the ethnic group has been selected as the student's primary ethnicity.

This field should be used with caution as it is not populated consistently for all students.

Data Classification: [Category 2](#)

PeopleSoft Source: CS.DIVERS_ETHNIC

Valid Values:

| Value | Description |
|-------|--|
| Y | The student indicated that this ethnic grp code is their primary race. |

| Value | Description |
|-------|--|
| N | Not designated as the student's primary ethnic grp code. |
| Null | Not Reported |

HISP_LATINO

Data Type: Varchar

Size: 1

Definition: A 1 digit code indicating whether or not the Student has selected the Hispanic/Latino flag during admissions.

Data Classification: [Category 2](#)

PeopleSoft Source: CS.ETHNICITY_DTL

Valid Values:

| Value | Description |
|-------|---|
| Y | The student indicated that they are of Hispanic/Latina/o/x decent. |
| N | The student did not indicate that they are of Hispanic/Latina/o/x decent. |
| Null | Not Reported |

LEGACY_CENSUS_RACE_CD (retired data element)

Data Type: Varchar

Size: 3

Definition: A three-character code collected from the student at time of Admission and/or registration. This is the legacy based census race code crosswalked to the ctcLink ETHNIC_GRP_CD. Retired as of Winter/2231.

Source: Cross-walked to the legacy value based on the ctcLink Campus Solutions ETHNIC_GRP_CD value.

Data Classification: [Category 3](#)

Example Valid Values:

| Example Value | Value Description |
|---------------|-------------------|
| 605 | Chinese/Tibetan |
| 608 | Filipino |
| 611 | Japanese |
| 612 | Korean |
| 619 | Vietnamese |
| 872 | African American |
| 900 | Black, Tahitian |
| 935 | Eskimo |
| 941 | Aleut |

LEGACY_RACE_CODE

Data Type: Varchar

Size: 1

Definition: A one-character code representing the student's race or ethnic origin

Data Classification: [Category 3](#)

Source: Cross-walked from the ctcLink Campus Solutions ETHNIC_GROUP.

Valid Values:

| Race Code | Description |
|-----------|---|
| 1 | Asian |
| 2 | Black/African American |
| 3 | American Indian |
| 4 | Hispanic |
| 5 | Pacific Islander |
| 6 | White |
| 7 | Native Hawaiian or Other Pacific Islander |
| 8 | Alaska Native |
| 9 | Multi-Racial |
| 0 | Other Race |
| Null | Not Reported |

DW_KEY

Data Type: Varchar

Size: 10

Definition: The Data Warehouse system-wide unique identifier assigned to each student. This field is used to track students longitudinally across all colleges. This field is used across all student related tables in the Data Warehouse and *is not college specific*.

Data Classification: [Category 3](#)

PeopleSoft Source: DW_KEY is retrieved based on available student identifiers in the following order: CS.EMPLID, SID, and SSN. If no identifier is found to exist in the Data Warehouse, a new DW_KEY is created.

Examples of Use: A system identifier and the primary key on many tables. Used for system unduplicated headcounts.

COLLEGE

Data Type: Char

Size: 3

Definition: A three-digit code used to identify each community or technical college in the state of Washington. College codes begin with the two-digit district code.

Data Classification: [Category 2](#)

PeopleSoft Source: The last three characters of INSTITUTION.

Lookup/Crosswalk: LOOKUP.DW_REF_ENR.COLLEGE_MASTER

LEGACY_YEAR

Data Type: Char

Size: 3

Definition: A three-character field identifying the academic year. The academic year begins with summer quarter and ends with spring quarter.

Data Classification: [Category 2](#)

PeopleSoft Source: Derived from STRM

Lookup/Crosswalk: LOOKUP.DW_REF_ENR.YRQ_CONVERT

Examples of Valid Values:

| Values | Value Descriptions |
|--------|--------------------|
| 990 | 1999-2000 |
| A01 | 2000-2001 |
| B01 | 2010-2011 |
| C01 | 2020-2021 |

LEGACY_QUARTER

Data Type: Char

Size: 1

Definition: A one-character code identifying the specific quarter of the enrollment. The academic year begins with summer quarter and ends with spring quarter.

Data Classification: [Category 2](#)

PeopleSoft Source: Derived from STRM

Lookup/Crosswalk: LOOKUP.DW_REF_ENR.YRQ_CONVERT

Valid Values:

| Values | Value Descriptions |
|--------|--------------------|
| 1 | Summer |
| 2 | Fall |
| 3 | Winter |
| 4 | Spring |

LEGACY_YRQ

Data Type: Char

Size: 4

Definition: The concatenation of YEAR and QUARTER. The first three characters are the YEAR, and the last character is the QUARTER.

Data Classification: [Category 2](#)

Legacy Source: SMIS.MIS-STU-D.YRQ

PeopleSoft Source: Derived from STRM

Lookup/Crosswalk: LOOKUP.DW_REF_ENR.YRQ_CONVERT

STUDENT_WAIVERS

Table Description

This table contains the information on waivers applied to student records in PeopleSoft Campus Solutions.

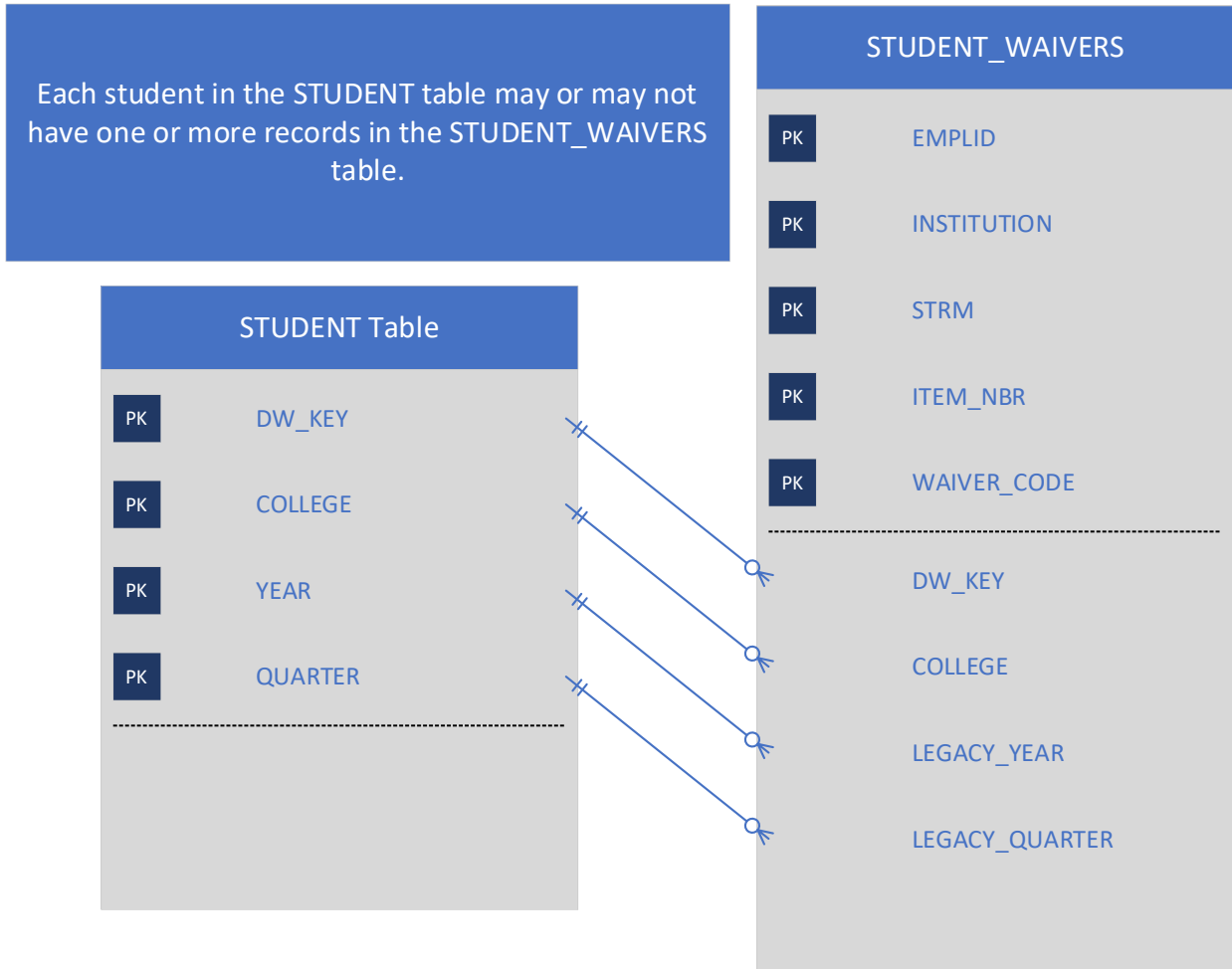
The data is aggregated by student, college, term, fee code and waiver code, therefore it is not at the transactional detail level available in PeopleSoft.

This table only contains the information about the account activity related to waivers (ITEM_TYPE_CD = W).

Note: The data in this table is replaced each quarter for the current academic year to pick up any changes that may have been done. The data for the academic year becomes final as of the spring snapshot. Because this data is changed throughout the academic year, it will not necessarily align with the Fee Pay Status codes in the Stuclass table.

Entity Relationship Diagram

The Entity Relationship Diagram (ERD) shown below consists only of the key data elements typically used for linking between tables. The full list of data elements are provided in the Field Definitions section for this table.



Field Descriptions

EMPLID (PK)

Data Type: Varchar

Size: 11

Definition: The PeopleSoft unique identifier assigned to each student and employee. The same EMPLID is used across all pillars and all institutions for each student/employee. The same EMPLID is used whether the student is an employee or student or both.

Data Classification: [Category 3](#)

PeopleSoft Source: CS. PS_ITEM_SF

INSTITUTION (PK)

Data Type: Char

Size: 5

Definition: The five-digit code used in ctclink to identify each community or technical college in the state of Washington.

Data Classification: [Category 2](#)

PeopleSoft Source: CS. PS_ITEM_SF

Lookup/Crosswalk: LOOKUP.DW_REF_ENR.COLLEGE_MASTER

STRM (PK)

Data Type: Char

Size: 4

Definition: The session term associated to the account activity. This is the PeopleSoft version of year and quarter.

Data Classification: [Category 2](#)

PeopleSoft Source: CS. PS_ITEM_SF

ITEM_NBR (PK)

Data Type: Varchar

Size: 15

Definition: In PeopleSoft a number is assigned to a transaction when it is initially posted on a student's account, whether it is a debit or credit. There can be multiple line sequences associated with an item number, one is the original transaction; the others are changes to the transaction.

Data Classification: [Category 2](#)

PeopleSoft Source: CS. PS_ITEM_SF

WAIVER_CODE (PK)

Data Type: Varchar

Size: 6

Definition: Waiver codes are similar to Fee Pay Status (FPS) codes in the legacy system and are configured to best match the FPS with a "W" at the beginning. They are used to waive or adjust a student qualifying charges.

Data Classification: [Category 2](#)

PeopleSoft Source: CS.PS_ITEM_SF

Lookup Table: LOOKUP.DW_REF_ENR.WAIVER_CODES

WAIVER_CODE_3DIGIT

Data Type: Char

Size: 3

Definition: The first three characters of the WAIVER_CODE. The first three characters represent the specific waiver and any additional characters represent the fee code typically.

Data Classification: [Category 2](#)

PeopleSoft Source: CS.PS_ITEM_SF

Lookup Table: LOOKUP.DW_REF_ENR.WAIVER_CODES_STATE_APPROVED

FEE_CD

Data Type: Varchar

Size: 6

Definition: Term Fee Codes are similar to fee codes in the legacy system but are only used for specific charges. Term Fee Codes are for fees that all students pay when enrolled for a term. For example tuition and mandatory fees.

Note that records with no FEE_CD value contain a single space so to be part of the primary key.

Data Classification: [Category 2](#)

PeopleSoft Source: CS.PS_ITEM_SF

Lookup Table: LOOKUP.DW_REF_ENR.WAIVER_FEE_CODES

DESCR

Data Type: Varchar

Size: 30

Definition: The description of the waiver code.

Data Classification: [Category 2](#)

PeopleSoft Source: CS.PS_WAIVER_CODE_TBL

LINE_AMT

Data Type: Decimal

Size: 10,2

Definition: This is the amount associated with one line of a transaction on a student's account whether it is a debit or a credit.

Data Classification: [Category 2](#)

PeopleSoft Source: CS.PS_ITEM_LINE_SF

DW_KEY

Data Type: Varchar

Size: 10

Definition: The Data Warehouse system-wide unique identifier assigned to each student. This field is used to track students longitudinally across all colleges. This field is used across all student related tables in the Data Warehouse and *is not college specific*.

Data Classification: [Category 3](#)

PeopleSoft Source: DW_KEY is retrieved based on available student identifiers in the following order: CS.EMPLID, SID, and SSN. If no identifier is found to exist in the Data Warehouse, a new DW_KEY is created.

Examples of Use: A system identifier and the primary key on many tables. Used for system unduplicated headcounts.

COLLEGE

Data Type: Char

Size: 3

Definition: A three-digit code used to identify each community or technical college in the state of Washington. College codes begin with the two-digit district code.

History: Pierce District split into two colleges in 2001-02.

Data Classification: [Category 2](#)

Legacy Source: SMIS.COLLEGE

PeopleSoft Source: The last three characters of CS. PS_ITEM_SF.ACCOUNT_TERM.INSTITUTION.

Lookup/Crosswalk: LOOKUP.DW_REF_ENR.COLLEGE; LOOKUP.DW_REF_ENR.COLLEGE4RPT; LOOKUP.DW_REF_ENR.COL_CD

LEGACY_YEAR

Data Type: Char

Size: 3

Definition: A three-character field identifying the academic year. The academic year begins with summer quarter and ends with spring quarter.

Data Classification: [Category 2](#)

PeopleSoft Source: Derived from first three characters of CS.PS_ITEM_SF.ACCOUNT_TERM and converted to the legacy year code.

Lookup/Crosswalk: LOOKUP.DW_REF_ENR.YRQ_CONVERT

Examples of Valid Values:

| Values | Value Descriptions |
|--------|--------------------|
| 990 | 1999-2000 |
| A01 | 2000-2001 |
| B01 | 2010-2011 |
| C01 | 2020-2021 |

LEGACY_QUARTER (PK)

Data Type: Char

Size: 1

Definition: A one-character code identifying the specific quarter of the enrollment. The academic year begins with summer quarter and ends with spring quarter.

Data Classification: [Category 2](#)

PeopleSoft Source: Derived from the fourth character of CS.PS_ITEM_SF.ACCOUNT_TERM and converted to the legacy quarter code.

Lookup/Crosswalk: LOOKUP.DW_REF_ENR.YRQ_CONVERT

Valid Values:

| Values | Value Descriptions |
|--------|--------------------|
| 1 | Summer |
| 2 | Fall |
| 3 | Winter |
| 4 | Spring |

LEGACY_YRQ

Data Type: Char

Size: 4

Definition: The concatenation of YEAR and QUARTER. The first three characters are the YEAR, and the last character is the QUARTER.

Data Classification: [Category 2](#)

PeopleSoft Source: Derived from the fourth character of CS.PS_ITEM_SF.ACCOUNT_TERM and converted to the legacy quarter code.

Lookup/Crosswalk: LOOKUP.DW_REF_ENR.YRQ_CONVERT

Appendix A: Data Classification Appendix

Each data element in the Data Warehouse is associated with a category classification that indicates the method of which to use and store the data.

For more information, see the [Data Classification](#) brief.

| Category | Description |
|-------------------|--|
| Category 1 | Public Information SBCTC does not consider any Data Warehouse data to be category 1. SBCTC does not release data to the public unless specifically requested. The release of public information is reserved for the college’s discretion based upon their FERPA directory information policies. |
| Category 2 | Sensitive Information Student related information that is considered “directory information” under FERPA and is generally not considered harmful or to be an invasion of privacy if released. This information can be disclosed to outside organizations with the student’s prior consent. This is information that would be released during a public records request of Data Warehouse data. |
| Category 3 | Confidential Information Enrollment information protected under FERPA, personnel and financial data. Category 3 includes all data elements except those explicitly stated in categories 2 and 4. Category 3 data is not distributed unless governed by a contract or data sharing agreement. |
| Category 4 | Confidential Information requiring Special Handling Highly confidential data that is exempt from disclosure under applicable state and federal laws such as personally identifiable data protected under FERPA. Category 4 data is information whose unauthorized use, access, disclosure, acquisition, modification, loss, or deletion could result in severe damage to SBCTC or colleges, students, employees or customers. This information has limited use per specific state and federal laws. |



Content is licensed under a Creative Commons Attribution 4.0 International License, unless noted otherwise.

Washington State Board for Community and Technical Colleges