



# DATA DICTIONARY

*FINANCIAL AID 1.2*

## Revisions

Change reference	Date	Version
Original Version	6/20/2023	1.0
Updated Database Descriptions	12/8/2023	1.1
Added FAFSA Simplification & FTI updates starting Aid Year 2025	9/11/2024	1.2

## Contacts

Data Services

[dataservices@sbctc.edu](mailto:dataservices@sbctc.edu)

# TABLE OF CONTENTS

Revisions .....	2
Contacts .....	2
DATABASE DESCRIPTION .....	7
ENTITY RELATIONSHIP DIAGRAM .....	8
FAFSA SIMPLIFICATION & FINANCIAL AID TAX INFORMATION .....	9
Notable impacts to FINAID 3.0 .....	9
FA_STUDENT_AWARD .....	10
Table Description .....	10
Data Elements .....	10
EMPLID (PK) .....	10
INSTITUTION (PK) .....	10
AID_YEAR (PK) .....	11
STRM (PK) .....	11
ITEM_TYPE (PK) .....	12
AMOUNT_STATUS (PK) .....	12
AMOUNT .....	13
SNAPSHOT_STRM .....	14
ACADEMIC_YEAR .....	15
LEGACY_YEAR .....	15
LEGACY_QUARTER .....	15
FA_STUDENT_AWARD_SNAPSHOT .....	16
Table Description .....	16
FA_AWARD .....	16
Table Description .....	16
Data Elements .....	16
INSTITUTION (PK) .....	16
AID_YEAR (PK) .....	17
ITEM_TYPE (PK) .....	17
DESCR .....	17
DESCRSHORT .....	17
AID_TYPE .....	18
FA_FUNDING_SOURCE .....	18
FA_SOURCE .....	18
FEDERAL_ID .....	19
IPEDS_CATEGORY .....	20

NEED_BASED_AID.....	21
REPORTING_GROUP.....	21
SNAPSHOT_STRM.....	22
ACADEMIC_YEAR .....	22
LEGACY_YEAR .....	22
NONDISBURSE_ND_FLAG.....	23
KEYWORD1.....	23
KEYWORD1_DESCR.....	24
KEYWORD2.....	24
KEYWORD2_DESCR.....	25
KEYWORD3.....	25
KEYWORD3_DESCR.....	25
FA_AWARD_SNAPSHOT.....	26
Table Description.....	26
FA_STUDENT_AWD_CANCELED .....	26
Table Description.....	26
Data Elements.....	26
EMPLID (PK).....	26
INSTITUTION (PK).....	27
AID_YEAR (PK).....	27
ITEM_TYPE (PK).....	27
CANCELED_STATUS .....	27
CANCEL_DECLINE_AMT.....	28
SNAPSHOT_STRM.....	28
ACADEMIC_YEAR .....	28
LEGACY_YEAR .....	29
FA_STUDENT .....	29
Table Description.....	29
Data Elements.....	29
EMPLID (PK).....	29
INSTITUTION (PK).....	29
AID_YEAR (PK).....	30
SEX .....	30
MARITAL_STAT .....	30
DEPENDENTS ( <i>retired data element</i> ).....	31
DEPNDCY_STAT.....	32
VETERAN.....	32

CURRENT_GRADE_LVL.....	33
FATHER_GRADE_LVL ( <i>retired data element</i> ).....	33
MOTHER_GRADE_LVL ( <i>retired data element</i> ).....	34
SOURCE.....	34
PELL_ELIGIBILITY.....	35
HOUSING_CODE_1 ( <i>retired data element</i> ).....	35
SNAPSHOT_STRM.....	35
ACADEMIC_YEAR .....	36
LEGACY_YEAR .....	36
FAMILY_SIZE ( <i>retired data element</i> ).....	36
HOUSING_TYPE_DW.....	37
SFA_STD_PARATT .....	37
FA_STUDENT_NEED .....	38
Table Description.....	38
Data Elements.....	38
EMPLID (PK).....	38
INSTITUTION (PK).....	38
AID_YEAR (PK).....	38
FED_EFC ( <i>retired data element</i> ) .....	39
EFC_STATUS ( <i>retired data element</i> ).....	39
FED_NEED_BASE_AID.....	40
FED_YEAR_COA.....	40
INST_YEAR_COA .....	40
PELL_YEAR_COA.....	41
FED_NEED .....	41
INST_NEED .....	41
FED_UNMET.....	41
INST_UNMET.....	42
FED_PARENT_CONTRB ( <i>retired data element</i> ) .....	42
FED_STDNT_CONTRB ( <i>retired data element</i> ) .....	42
SNAPSHOT_STRM.....	42
ACADEMIC_YEAR .....	43
LEGACY_YEAR .....	43
STUDENT_INCOME.....	43
TOTAL_PARENT_INCOME.....	44
FAMILY_INCOME.....	44
STUDENT_AID_INDEX.....	44

STUDENT_AID_INDEX_STATUS.....	45
FORMULA_TYPE.....	46
Appendix A: Data Classification .....	47
Appendix B: Historical Reference Appendix.....	48

# DATABASE DESCRIPTION

This database is considered part of Data Warehouse 3.0. The tables contain aid year 2023 data forward. To access prior aid years of financial aid data, use the Data Warehouse 2.0 FINAID database.

The SBCTC updates the financial aid database quarterly, replacing all current aid year records with the most recent data. At SBCTC, this data is stored in the DW\_FINAID database.

Each of the tables in this database contain information for students who were offered financial aid.

Records with an EMPLID that begins with “X” are excluded. The legacy Financial Aid database only included records for students who had a valid social security number (SSN) and SSN was the primary key identifier. This database, sourced from ctclink, includes all financial aid records for students who have been at least offered financial aid regardless if the student has a valid SSN in the system.

FASFA and WAFSA information are included in the FA\_STUDENT table and are indicated as such in this data dictionary.

The use of FAFSA data and the inclusion of related data elements in the data warehouse are for the purpose of meeting state and federal reporting requirements which is an allowable use under the FERPA audit and evaluation of financial aid programs exemption.

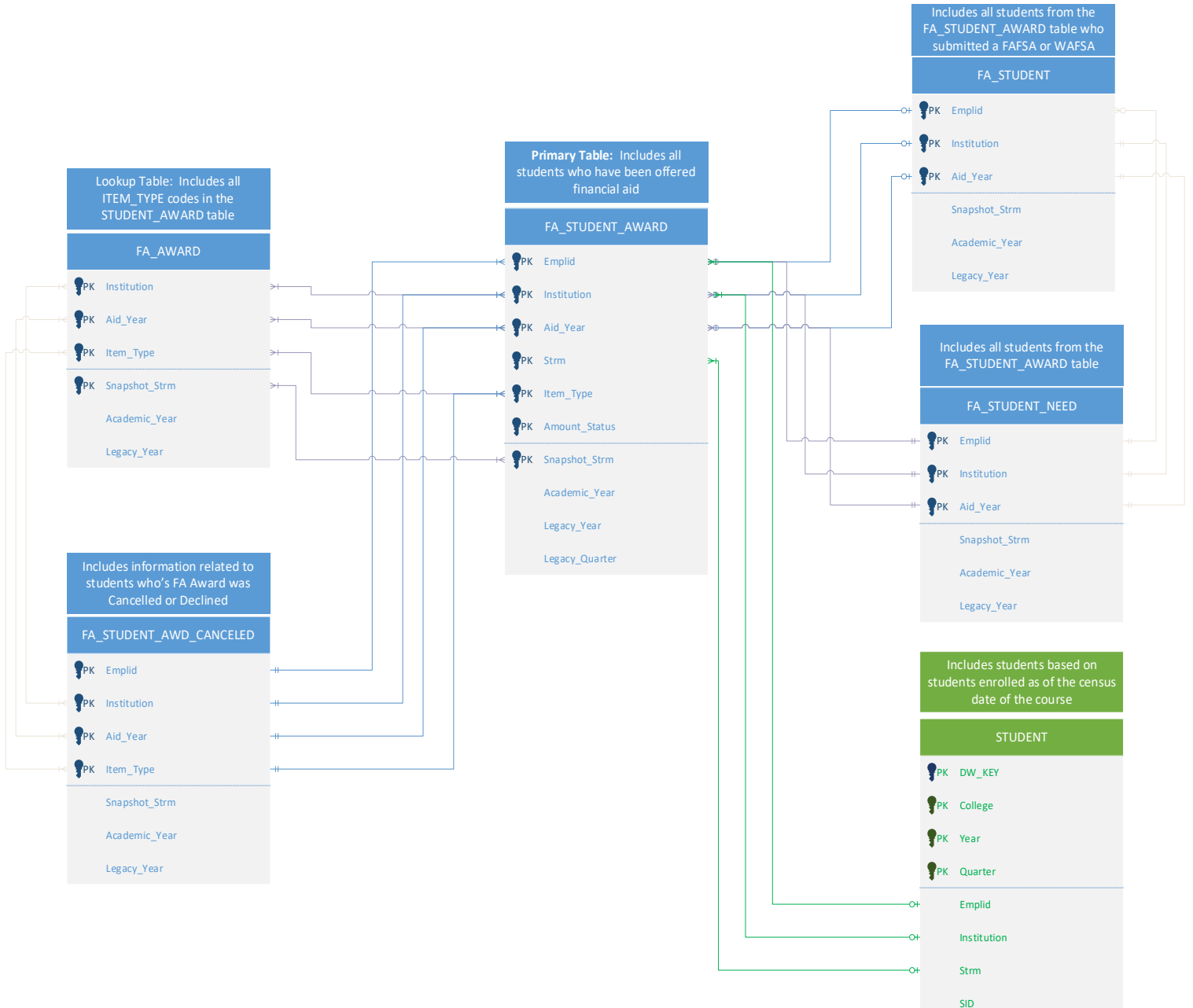
Institutional Researchers use the FAFSA data in the data warehouse for research purposes, for example providing aggregated information to the legislature in support of aid programs. Researchers also compile and study aggregated data for the purpose of continuous improvement in support of our mission to students.

Section 483(a)(3)(E) of the HEA restricts the use of the FAFSA/ISIR data to the application, award, and administration of aid awarded under federal student aid programs, state aid, or aid awarded by eligible institutions. The Department interprets “administration of aid” to include audits and program evaluations necessary for the efficient and effective administration of those student aid programs.

**Financial Aid information must not be shared with external researchers or entities in any way that would lead to identification of individuals.**

# ENTITY RELATIONSHIP DIAGRAM

■ DW\_FINAID Database  
■ SMIS Database





# FAFSA SIMPLIFICATION & FINANCIAL AID TAX INFORMATION

## Starting in Aid Year 2025

The FAFSA Simplification Act was enacted into law as part of the Consolidated Appropriations Act of 2021. The FAFSA Simplification Act represents a significant overhaul of federal student aid, including the Free Application for Federal Student Aid (FAFSA) form, need analysis, Pell Grant calculations, and many policies and procedures for schools that participate in the Title IV programs. The Simplified FAFSA was implemented for aid year 2025.

## Changes from the FUTURE Act

The FUTURE Act authorizes a direct data exchange (FA-DDX) with the Internal Revenue Service (IRS) to facilitate completing the FAFSA form. The previous tool to transfer U.S. income and tax information from the IRS where applicants initiated the electronic transfer of U.S. federal tax return information into their FAFSA form, will no longer be used. Implementation of the FA-DDX eliminates the need for most applicants to self-report their income and tax information reported to the IRS.

However, this is highly sensitive Category 4 data requiring special handling with additional provisions, prohibiting the access, disclosure and use of federal tax information (FTI) data. Learn more about [Data Use and Considerations Under the FUTURE Act and FAFSA® Simplification Act](#).

## Notable impacts to FINAID 3.0

- Fields no longer populated starting in Aid Year 2025 and have no replacement field
  - FA\_STUDENT
    - DEPENDENTS
    - FAMILY SIZE
  - FA\_STUDENT\_NEED
    - FED\_PARENT\_CONTRB
    - FED\_STUDENT\_CONTRB
- Fields no longer populated starting in Aid Year 2025 but there is a field that contains similar data

Table Name	Field Name No Longer Populated	Replacement Field Name
FA_STUDENT	FATHER_GRADE_LVL	SFA_STD_PARATT
FA_STUDENT	MOTHER_GRADE_LVL	SFA_STD_PARTT
FA_STUDENT	HOUSING_CODE_1	HOUSING_TYPE_DW
FA_STUDENT_NEED	FED_EFC	STUDENT_AID_INDEX
FA_STUDENT_NEED	EFC_STATUS	STUDENT_AID_INDEX_STATUS

- New fields starting in Aid Year 2025
  - FA\_STUDENT\_NEED
    - FORMULA\_TYPE

# FA\_STUDENT\_AWARD

## Table Description

The FA\_STUDENT\_AWARD table contains quarterly records describing the type, status and amount of financial aid the student has been offered or awarded. This table represents the primary entity in the DW 3.0 Financial Aid database as most other tables only include students who met the criteria for inclusion in the FA\_STUDENT\_AWARD table.

The data in this table is replaced each term during the aid year. For example, when processing winter data, summer and fall quarter data will be replaced to reflect any changes that may have been made. Refer to the SNAPSHOT\_STRM field to identify the last time the data was replaced.

A snapshot of the data prior to its replacement is stored in the FA\_STUDENT\_AWARD\_SNAPSHOT and FA\_AWARD\_SNAPSHOT tables keyed on SNAPSHOT\_STRM. Each snapshotted term data will reside in the table, not replaced by the consecutive term.

## Data Elements

### EMPLID (PK)

**Data Type:** VARCHAR

**Size:** 11

**Definition:** The PeopleSoft unique identifier assigned to each student and employee. The same EMPLID is used across all pillars and all institutions for each student/employee. The same EMPLID is used whether the student is an employee or student or both. Excludes EMPLID's that begin with "X".

**Data Classification:** [Category 3](#)

**PeopleSoft Source:** CS. STDNT\_AWRD\_DISB.EMPLID

### INSTITUTION (PK)

**Data Type:** CHAR

**Size:** 5

**Definition:** The five-digit code used in ctcLink to identify each community or technical college in the state of Washington.

**Data Classification:** [Category 2](#)

**PeopleSoft Source:** CS. STDNT\_AWRD\_DISB.INSTITUTION

**Lookup/Crosswalk:** LOOKUP.DW\_REF\_ENR.COLLEGE\_MASTER

## AID\_YEAR (PK)

**Data Type:** CHAR

**Size:** 4

**Definition:** A ctcLink variable that indicates the financial aid year. The academic year begins with summer quarter and ends with spring quarter; however, the Financial Aid year may differ by college. Some colleges offer financial aid starting summer quarter thru spring quarter (header colleges), others offer aid fall thru summer quarter (trailing colleges). The value represents the calendar year in which the financial aid year ends.

**Data Classification:** [Category 2](#)

**PeopleSoft Source:** CS. STDNT\_AWRD\_DISB.AID\_YEAR

**Valid Values:**

Value	Value Description
2019	Academic year 2018-19
2022	Academic Year 2021-22
2023	Academic Year 2022-23

## STRM (PK)

**Data Type:** CHAR

**Size:** 4

**Definition:** Session Term. A ctcLink variable that indicates the academic year and term. The first character represents the millennium. The second and third characters represent the 2-digit calendar year and the last character represents the term (or quarter).

The academic year begins with summer quarter and ends with spring quarter; however, the financial aid year may differ by college. Some colleges offer financial aid starting summer quarter thru spring quarters (header colleges), others offer aid fall thru summer quarters (trailing colleges). The use of AID\_YEAR will assist when determining which STRM's should be included when using the data for a specified academic year.

**Data Classification:** [Category 2](#)

**PeopleSoft Source:** CS. STDNT\_AWRD\_DISB.STRM

**Lookup/Crosswalk:** LOOKUP.DW\_REF\_ENR.YRQ\_CONVERT

**Examples of Valid Values:**

Value	Value Description
2197	Fall Quarter 2019
2201	Winter Quarter 2020
2213	Spring Quarter 2021
2225	Summer Quarter 2022

## ITEM\_TYPE (PK)

**Data Type:** VARCHAR

**Size:** 12

**Definition:** Used to identify, define, and categorize aid awarded by the colleges. Item types are the basic work unit of the Student Financials and Financial Aid modules.

**Data Classification:** [Category 3](#)

**PeopleSoft Source:** CS.STDNT\_AWRD\_DISB.ITEM\_TYPE

**Lookup/Crosswalk:** CS.ITEM\_TYPE\_FA

## AMOUNT\_STATUS (PK)

**Data Type:** CHAR

**Size:** 1

**Definition:** Indicates the status of the student's financial aid award. There are four statuses: Offered, Accepted, Authorized and Disbursed. There are instances when FA Item Type is paid through the SF Cashier process instead of the Financial Aid disbursement process but must still be accounted for in the Financial Aid balances. When Item Type Keyword 1 ends in "\_ND", NONDISBURSE\_ND\_FLAG is set to "Y" and when the Offer Balance <> 0 then the Offer Balance amount is used to populate Accepted, Authorized and Disbursed amounts and a status row is inserted for each.

**Data Classification:** [Category 3](#)

**PeopleSoft Source:** Derived during reengineering. If the amount of aid does not equal zero, a record is created for the associated balance fields using the fields OFFER\_BALANCE, ACCEPT\_BALANCE, AUTHORIZED\_BALANCE and DISBURSED\_BALANCE from the CS.STDNT\_AWRD\_DISB table.

This data is derived with the following case and union statements:

```
CASE
    WHEN DISBURSED_BALANCE <> 0 THEN 4
    WHEN NONDISBURSE_ND_FLAG = 'Y' AND OFFER_BALANCE <> 0 THEN 4
END AS AMOUNT_STATUS
UNION
CASE
    WHEN AUTHORIZED_BALANCE <> 0 THEN 3
    WHEN NONDISBURSE_ND_FLAG = 'Y' AND OFFER_BALANCE <> 0 THEN 3
END AS AMOUNT_STATUS
UNION
CASE
    WHEN ACCEPT_BALANCE <> 0 THEN 2
    WHEN NONDISBURSE_ND_FLAG = 'Y' AND OFFER_BALANCE <> 0 THEN 2
END AS AMOUNT_STATUS
UNION
```

```

CASE
    WHEN OFFER_BALANCE <> 0 THEN 1
END

```

**Examples of Use:** The amount status of Disbursed is the most commonly used. Amount statuses Offered and Disbursed are used for IPEDS reporting. When FA staff report to WSAC for Unit Record and Interim, they report the disbursed status amounts.

**Valid Values:**

Value	Description	Definition
1	Offered	The status of the particular award amount that the student could receive. Students are required to take an action to accept each offer of financial aid. This status is used for reporting “aid awarded” in the majority of the IPEDS Student Financial Aid Survey.
2	Accepted	The status of the particular award after it is offered by the college and the student accepts any portion of the offered amount.
3	Authorized	The status of the particular award after having been offered by the college and accepted by the student. Authorized status means that accepted offer has successfully passed all rules for the particular award. Before aid can be disbursed, aid must pass authorization. An example of rules would be student must be enrolled, verification must be complete, SAP status is in good standing.
4	Disbursed	The status of the particular award after having been offered by the college, accepted by the student and authorized by the college. Disbursed status means the financial aid award has been passed from Financial Aid to Student Financials to apply to the student’s Customer Accounts. Disbursed is considered the status that reflects the aid the student received. This status is used for WSAC Unit Record and Interim reporting. This status is used for reporting “loans awarded to and accepted by the student” in the IPEDS Student Financial Aid Survey.

Note: IPEDS "aid awarded" refers to grant, scholarship, or loan aid awarded to students. For grant or scholarship aid, institutions should report aid awarded to students. This amount may be different from the amount actually disbursed to students. For example, a student may be awarded grant or scholarship aid at the beginning of the academic year but then leave the institution before the entire amount is disbursed. In this case, institutions should report the original amount of grant or scholarship aid that was awarded. For loans to students, institutions should report “loans awarded to and accepted by the student”.

## AMOUNT

**Data Type:** FLOAT

**Definition:** The amount of financial aid associated to the AMOUNT\_STATUS.

**Data Classification:** [Category 3](#)

**PeopleSoft Source:** If the amount of aid does not equal zero, a record is created for the associated amount fields using the fields OFFER\_BALANCE, ACCEPT\_BALANCE, AUTHORIZED\_BALANCE and

DISBURSED\_BALANCE from the CS.STDNT\_AWRD\_DISB table. There are instances when FA Item Type is paid through the SF Cashier process instead of the Financial Aid disbursement process but must still be accounted for in the Financial Aid balances. When Item Type Keyword 1 ends in \_ND, flag NONDISBURSE\_ND\_FLAG is set to Y and when the Offer Balance <> 0 then the Offer Balance amount is used to populate Accepted, Authorized and Disbursed amounts and a status row is inserted for each.

This data is derived with the following case and union statements:

```
SUM(CASE
    WHEN DISBURSED_BALANCE <> 0 THEN (DISBURSED_BALANCE)
    WHEN NONDISBURSE_ND_FLAG = 'Y' AND OFFER_BALANCE <> 0 THEN
    (DISBURSED_BALANCE) END) AS AMOUNT
UNION
SUM(CASE
    WHEN AUTHORIZED_BALANCE <> 0 THEN (AUTHORIZED_BALANCE)
    WHEN NONDISBURSE_ND_FLAG = 'Y' AND OFFER_BALANCE <> 0 THEN
    (AUTHORIZED_BALANCE) END) AS AMOUNT
UNION
SUM(CASE
    WHEN ACCEPT_BALANCE <> 0 THEN (ACCEPT_BALANCE)
    WHEN NONDISBURSE_ND_FLAG = 'Y' AND OFFER_BALANCE <> 0 THEN
    (ACCEPT_BALANCE) END) AS AMOUNT
UNION
SUM(CASE
    WHEN OFFER_BALANCE <> 0 THEN (OFFER_BALANCE)
    END)
```

**Examples of Use:** The amount associated with amount status of Disbursed is the most commonly used. Amounts associated to amount statuses Offered and Disbursed are used for IPEDS reporting. When FA staff report to WSAC for Unit Record and Interim, they report the disbursed status amounts.

## SNAPSHOT\_STRM

**Data Type:** CHAR

**Size:** 4

**Definition:** Reflects the STRM the last snapshot was taken. The data in this table is replaced each term during the aid year. For example, when processing winter data, summer and fall quarter data will be replaced to reflect any changes that may have been made. A snapshot of the data prior to its replacement is stored in the FA\_STUDENT\_AWARD\_SNAPSHOT table.

**Data Classification:** [Category 2](#)

## ACADEMIC\_YEAR

**Data Type:** CHAR

**Size:** 7

**Definition:** Reflects the academic year associated with the aid year. The data in this table is replaced each term during the aid year. For example, when processing winter data, summer and fall quarter data will be replaced to reflect any changes that may have been made. A snapshot of the data prior to its replacement is stored in the FA\_STUDENT\_AWARD\_SNAPSHOT table

**Data Classification:** [Category 2](#)

**Source:** Derived from CS. STDNT\_AWRD\_DISB.AID\_YEAR

**Lookup/Crosswalk:** LOOKUP.DW\_REF\_ENR.YRQ\_CONVERT

## LEGACY\_YEAR

**Data Type:** CHAR

**Size:** 3

**Definition:** A three-character field identifying the academic year in legacy terms. The academic year begins with summer quarter and ends with spring quarter. This field allows for linking to the SMIS tables.

**Data Classification:** [Category 2](#)

**PeopleSoft Source:** Derived from CS. STDNT\_AWRD\_DISB.STRM

**Lookup/Crosswalk:** LOOKUP.DW\_REF\_ENR.YRQ\_CONVERT

**Example of Valid Values:**

Value	Value Description
990	1999-2000
A01	2000-2001
B01	2010-2011
C01	2020-2021

## LEGACY\_QUARTER

**Data Type:** CHAR

**Size:** 1

**Definition:** A one-character code identifying the specific quarter of the enrollment in legacy terms. The academic year begins with summer quarter and ends with spring quarter.

**Data Classification:** [Category 2](#)

**Source:** Derived from CS. STDNT\_AWRD\_DISB.STRM

**Lookup/Crosswalk:** LOOKUP.DW\_REF\_ENR.YRQ\_CONVERT

**Example of Valid Values:**

Value	Value Description
1	Summer

Value	Value Description
2	Fall
3	Winter
4	Spring

# FA\_STUDENT\_AWARD\_SNAPSHOT

## Table Description

The FA\_STUDENT\_AWARD\_SNAPSHOT table contains the previously snapshotted records for the aid year in the FA\_STUDENT\_AWARD table because the data in the FA\_STUDENT\_AWARD table is replaced with the current aid year data during each quarterly process. This table retains the previous quarters data to provide comparisons to previous quarters.

All fields in this table mimic the FA\_STUDENT\_AWARD table with the inclusion of SNAPSHOT\_STRM which is part of the primary key of this table.

# FA\_AWARD

## Table Description

The FA\_AWARD table contains reference information related to the FA\_STUDENT\_AWARD data. This table consists of Item Types associated to financial aid with their associated characteristics.

## Data Elements

### INSTITUTION (PK)

**Data Type:** CHAR

**Size:** 5

**Definition:** The five-digit code used in ctclink to identify each community or technical college in the state of Washington.

**Data Classification:** [Category 2](#)

**PeopleSoft Source:** CS. ITEM\_TYPE\_FA.INSTITUTION

**Lookup/Crosswalk:** LOOKUP.DW\_REF\_ENR.COLLEGE\_MASTER



## AID\_YEAR (PK)

**Data Type:** CHAR

**Size:** 4

**Definition:** A ctcLink variable that indicates the financial aid year. The academic year begins with summer quarter and ends with spring quarter; however, the Financial Aid year may differ by college. Some colleges offer financial aid starting summer quarter thru spring quarter (header colleges), others offer aid fall thru summer quarter (trailing colleges). The value represents the calendar year in which the financial aid year ends.

**Data Classification:** [Category 2](#)

**PeopleSoft Source:** CS. ITEM\_TYPE\_FA.AID\_YEAR

**Example Valid Values:**

Value	Value Description
2019	Academic year 2018-19
2022	Academic Year 2021-22
2023	Academic Year 2022-23

## ITEM\_TYPE (PK)

**Data Type:** VARCHAR

**Size:** 12

**Definition:** Used to identify, define, and categorize aid awarded by the colleges. Item types are the basic work unit of the Student Financials and Financial Aid modules.

**Data Classification:** [Category 3](#)

**PeopleSoft Source:** CS. ITEM\_TYPE\_FA.ITEM\_TYPE

## DESCR

**Data Type:** VARCHAR

**Size:** 30

**Definition:** The description of the ITEM\_TYPE. This field provides the description of the specific aid offered to the student. There are rare instances where the description may differ between the Item Type table and the FA Item Type table.

**Data Classification:** [Category 3](#)

**PeopleSoft Source:** CS. ITEM\_TYPE\_FA.DESCR

## DESCRSHORT

**Data Type:** VARCHAR

**Size:** 10

**Definition:** The short description of the ITEM\_TYPE.

**Data Classification:** [Category 3](#)

**PeopleSoft Source:** CS. ITEM\_TYPE\_FA.DESCRSHORT

## AID\_TYPE

**Data Type:** VARCHAR

**Size:** 21

**Definition:** The second character of the ITEM\_TYPE identifies the financial aid type as referenced in the ctclink Reference Center: <https://ctclinkreferencecenter.ctclink.us/m/92427/l/934116-9-2-financial-aid-item-types>

**Data Classification:** [Category 3](#)

**PeopleSoft Source:** Derived field using the second character of CS. ITEM\_TYPE\_FA.ITEM\_TYPE.

**Example of Valid Values:**

Value	Value Description
1	Grants
2	Scholarship
3	Work Study
4	3 <sup>rd</sup> Party Sponsorship
5	VA Benefits
6	Loans

## FA\_FUNDING\_SOURCE

**Data Type:** VARCHAR

**Size:** 11

**Definition:** The third character of the ITEM\_TYPE identifies the funding source of the aid as referenced in the ctclink Reference Center:

<https://ctclinkreferencecenter.ctclink.us/m/92427/l/934116-9-2-financial-aid-item-types>

**Data Classification:** [Category 3](#)

**PeopleSoft Source:** Derived field using the third character of CS. ITEM\_TYPE\_FA.ITEM\_TYPE.

**Valid Values:**

Value	Value Description
1	Federal
2	State
3	Institution
4	Other

## FA\_SOURCE

**Data Type:** VARCHAR

**Size:** 1

**Definition:** Source of the financial aid funding. Financial aid item type configuration allows you to specify if the item type is Federal, State, Private, Institutional, or other. Item types specified under the Federal type will automatically be evaluated against delivered Federal processing rules when awarding for example, aggregate aid limits, Pell eligibility, etc. as outlined in the ctclink Reference

Center: [https://ctclinkreferencecenter.ctclink.us/m/local\\_config\\_guides/l/1232505-cs-local-configuration-guide-financial-aid](https://ctclinkreferencecenter.ctclink.us/m/local_config_guides/l/1232505-cs-local-configuration-guide-financial-aid)

Data Classification: [Category 3](#)

PeopleSoft Source: CS. ITEM\_TYPE\_FA.\_FA\_SOURCE

Example Valid Values:

Value	Value Description
Null	Not Indicated
F	Federal
G	Government
I	Institutional
O	Other
P	Private
S	State

## FEDERAL\_ID

Data Type: VARCHAR

Size: 4

**Definition:** The federal program associated with the item type. Note this field is only available if the item type source is set to Federal. Item types specified under the Federal type will automatically be evaluated against delivered Federal processing rules when awarding for example, aggregate aid limits, Pell eligibility, etc. as outlined in the ctcLink Reference Center:

[https://ctclinkreferencecenter.ctclink.us/m/local\\_config\\_guides/l/1232505-cs-local-configuration-guide-financial-aid](https://ctclinkreferencecenter.ctclink.us/m/local_config_guides/l/1232505-cs-local-configuration-guide-financial-aid)

Data Classification: [Category 3](#)

PeopleSoft Source: CS. ITEM\_TYPE\_FA.FEDERAL\_ID

Example Valid Values:

Value	Description
NSF	National Science Foundation
NURS	Nursing Loan
OTHR	Other Federal Fund
PCL	Primary Care Loan
PELL	Federal PELL Grant
PERK	Federal Perkins Loan Program
PLUS	Federal Stafford Loan, PLUS
SEOG	Federal SEOG
SMRT	National Smart Grant
STFS	Fed Stafford Loan – Subsidized
STFU	Fed Stafford Loan-Unsubsidized
TCH	TEACH Grant
NULL	Not indicated

## IPEDS\_CATEGORY

**Data Type:** VARCHAR

**Size:** 10

**Definition:** The IPEDS Category is used for grouping of Item Types derived from KEYWORD1 in the Item Type table. The IPEDS Category is required to be provided on the Item Type Request form submitted by colleges to SBCTC. Not Reported should be used instead of not assigning a KEYWORD1 for IPEDS category.

**Data Classification:** [Category 3](#)

**PeopleSoft Source:** This data is derived from ITEM\_TYPE\_TBL.KEYWORD1

**Examples of Use:** This data element is required for the reporting of the IPEDS Financial Aid survey

**Valid Values:**

Value	Description	Examples
FED_PELL	Federal Pell Grants	
FED_OTHER	Other Federal Grant or Scholarship Aid (not Pell, not Veterans Aid)	ACG, Perkins, FSEOG, SMART, Gear-Up, TRiO, CARES Act
FED_WRKST	Federal WorkStudy	
WORKSTUDY	All Other non-Federal WorkStudy	State or Institutional Workstudy, Workfirst Workstudy
INSTITUTN	Institutional Grant or Scholarship Aid	2.5/3.5% Waiver, 3% Waiver, Veterans Waivers, No Need Waivers
LOAN_FED	Federal Loans (do not include loans that are not made directly to the student such as PLUS/Parent Loans)	Perkins, Nursing, Sub Direct, Stafford, Unsub Direct
LOAN_OTHER	Alternative, Private or Institutional Loans (do not include loans that are not made directly to the student)	
PLUS	Parent Loans (loans not made directly to the student)	PLUS Loans
VETERAN	Federal Veterans Education Benefits (other types of Veterans aid should be reported as PRIVATE, INSTITUTIONAL or STATE)	
PRIVATE	Private or Outside Grant or Scholarship Aid	College Success Foundation, Rotary Club Scholarship

Value	Description	Examples
STATE	State or Local Grant or Scholarship Aid	SNG/WCG, Worker Retraining, Workfirst, BFET, Opp Grants, EAG, LEP, High School Tuition Waiver, Need-Based Tuition Waivers, Covid Relief Aid (non-Cares Act)
NOT_REP or Null	Any other aid not reportable to IPEDS	

Note 1: Non Federal Workstudy will be excluded from IPEDS reporting

Note 2: PLUS/Parent Loans will be excluded from IPEDS reporting

Note 3: Federal Veterans Education Benefits will be excluded from Section I IPEDS reporting, but non-Federal Veterans aid is still reportable under categories such as PRIVATE aid (e.g. Veterans Scholarships) or INSTITUTIONAL aid (e.g. Veterans Waivers) or STATE aid (e.g. Books for 72 Dependents) etc.

## NEED\_BASED\_AID

**Data Type:** CHAR

**Size:** 1

**Definition:** Indicates whether the type of aid is need based as reported to the Washington Student Achievement Council (WSAC).

**Data Classification:** [Category 3](#)

**PeopleSoft Source:** Data is derived using CTC\_URR\_AWD\_CFG & CTC\_URR\_AWD\_CAT tables

This data is derived with the following criteria: CTC\_REPORTING\_REQ in ('NBO','NBR') = "Y" else "N"

**Examples of Use:** This data element is used during the setting of the STUDENT table ECON\_DISAD\_IND.

**Valid Values:**

Value	Description
Y	Yes, this aid is considered need based.
N	No, this aid is not considered need based.

## REPORTING\_GROUP

**Data Type:** VARCHAR

**Size:** 15

**Definition:** A higher level grouping or category of Item Types created to assist with reporting. Item Types are manually assigned by the Data Warehouse team to one of these reporting groups based on their description and/or by request. Not all item types are assigned to a REPORTING\_GROUP.

**Data Classification:** [Category 3](#)

**Lookup/Crosswalk:** PODS.REFERENCE.ITEM\_TYPEXWaIKSTDNT\_GRP

**Example Valid Values:**

Value	Description
CARES_ACT	Federal Coronavirus Aid, Relief, and Economic Security Act
COVID_RELIEF	State COVID Emergency Relief Funding for Undocumented Students
OPP_GRANT	Opportunity Grant for low-income adults training for high-wage, high-demand careers
PELL	Federal Pell Grant
SUB_DIRECT	Federal Direct Subsidized Loan
UNSUB_DIRECT	Federal Direct Unsubsidized Loan
WCG	Washington College Grant/State Need Grant
Blank/NULL	No assigned REPORTING_GROUP

## SNAPSHOT\_STRM

**Data Type:** CHAR

**Size:** 4

**Definition:** Reflects the STRM the last snapshot was taken. The quarterly data associated with the aid year is replaced each term during the aid year. For example, when processing winter data, summer and fall quarter data will be replaced to reflect any changes that may have been made in ctcLink. A snapshot of the data prior to its replacement is stored in the FA\_STUDENT\_AWARD\_SNAPSHOT table.

**Data Classification:** [Category 2](#)

## ACADEMIC\_YEAR

**Data Type:** CHAR

**Size:** 7

**Definition:** A translation of AID\_YEAR to a full academic year format that includes both the beginning and ending calendar years included in the academic year.

**Data Classification:** [Category 2](#)

**Source:** Derived from STRM.

**Lookup/Crosswalk:** LOOKUP.DW\_REF\_ENR.YRQ\_CONVERT

## LEGACY\_YEAR

**Data Type:** CHAR

**Size:** 3

**Definition:** A three-character field identifying the academic year. The academic year begins with summer quarter and ends with spring quarter. This data element is included for the purposes of joins to the SMIS tables.

**Data Classification:** [Category 2](#)

**Source:** Derived from STRM.

**Lookup/Crosswalk:** LOOKUP.DW\_REF\_ENR.YRQ\_CONVERT

## NONDISBURSE\_ND\_FLAG

**Data Type:** CHAR

**Size:** 1

**Definition:** Derived field from Item Type table when KEYWORD1 ends in “\_ND”. Indicates that the aid was disbursed from the Student Financials Cashier process instead of the Financial Aid disbursement process.

**History:** Starting in Aid Year 2025, added to the Data Warehouse.

**Data Classification:** [Category 3](#)

**PeopleSoft Source:** Derived from ITEM\_TYPE\_TBL.KEYWORD1 when ends in “\_ND” then “Y” else “N”

**Examples of Use:** This data element is used during the setting of the FA\_STUDENT\_AWARD table ACCEPT\_STATUS, AUTHORIZED\_STATUS, DISBURSED\_STATUS, ACCEPT\_AMOUNT, AUTHORIZED\_AMOUNT and DISBURSED\_AMOUNT, when = Y, then OFFERED values area used for all status and amounts. Used during the setting of the FA\_AWARD table IPEDS\_CATEGORY, along with KEYWORD1.

**Valid Values:**

Value	Description
Y	This aid was not disbursed through Financial Aid.
N	This aid was disbursed through Financial Aid.

## KEYWORD1

**Data Type:** VARCHAR

**Size:** 10

**Definition:** The KEYWORD1 is a field on the ITEM\_TYPE\_TBL used to derive IPEDS\_CATEGORY and NONDISBURSE\_ND\_FLAG.

**History:** Starting in Aid Year 2025, added to the Data Warehouse.

**Data Classification:** [Category 3](#)

**PeopleSoft Source:** CS.KEYWORD\_TBL.KEYWORD1 where KEYWORD\_NUM = 1

**Example Valid Values:**

Value	Description
FED_OTHER	Other Federal Grant or Scholarship Aid
FED_OTH_ND	Non-Disburse Other Federal Grant or Scholarship Aid
INST_ND	Non-Disburse Institutional Grant or Scholarship Aid

Value	Description
INSTITUTN	Institutional Grant or Scholarship Aid
PRIVATE	Private or Outside Grant or Scholarship Aid
PRIVATE_ND	Non-Disburse Private or Outside Grant or Scholarship Aid
STATE	Non-Disburse State or Local Grant or Scholarship Aid
STATE_ND	State or Local Grant or Scholarship Aid
NOT_REP_ND	Any other aid not reportable to IPEDS
NOT_REP or Null	Non-Disburse Other aid not reportable to IPEDS

## KEYWORD1\_DESCR

**Data Type:** VARCHAR

**Size:** 30

**Definition:** The description of the KEYWORD1. This field provides the description of the specific Keyword1 value.

**History:** Starting in Aid Year 2025, added to the Data Warehouse.

**Data Classification:** [Category 3](#)

**PeopleSoft Source:** CS.KEYWORD\_TBL.DESCR where KEYWORD\_NUM = 1

## KEYWORD2

**Data Type:** VARCHAR

**Size:** 10

**Definition:** The KEYWORD2 is a field on the ITEM\_TYPE\_TBL. Keywords are used to help categorize, organize and add detail to Item Types. The use has not yet been defined for Keyword2, this is a placeholder field.

**History:** Starting in Aid Year 2025, added to the Data Warehouse.

**Data Classification:** [Category 3](#)

**PeopleSoft Source:** CS.KEYWORD\_TBL.KEYWORD1 where KEYWORD\_NUM = 2

**Valid Values:**

Value	Description
Null	Not Indicated



## KEYWORD2\_DESCR

**Data Type:** VARCHAR

**Size:** 30

**Definition:** The description of the KEYWORD2. This field provides the description of the specific Keyword2 value.

**Data Classification:** [Category 3](#)

**PeopleSoft Source:** CS.KEYWORD\_TBL.DESCR where KEYWORD\_NUM = 2

## KEYWORD3

**Data Type:** VARCHAR

**Size:** 10

**Definition:** The KEYWORD3 is a field on the ITEM\_TYPE\_TBL used to identify group item types into 2 major categories, Global and Local. Some item types may be assigned into a minor category, SBCTC Use Only.

**History:** Starting in Aid Year 2025, added to the Data Warehouse.

**Data Classification:** [Category 3](#)

**PeopleSoft Source:** CS.KEYWORD\_TBL.KEYWORD1 where KEYWORD\_NUM = 3

**Example Valid Values:**

Value	Description
GLOBAL	Global ctcLink Item Types
LOCAL	Local College Item Types
SBCTC	SBCTC Use Only
DONOTUSE	Do Not Use
Null	Not Indicated

## KEYWORD3\_DESCR

**Data Type:** VARCHAR

**Size:** 30

**Definition:** The description of the KEYWORD3. This field provides the description of the specific Keyword3 value.

**History:** Starting in Aid Year 2025, added to the Data Warehouse.

**Data Classification:** [Category 3](#)

**PeopleSoft Source:** CS.KEYWORD\_TBL.DESCR where KEYWORD\_NUM = 3

# FA\_AWARD\_SNAPSHOT

## Table Description

The FA\_AWARD\_SNAPSHOT table contains the FA\_AWARD table previous quarterly records for the academic year because the data in the FA\_AWARD table is replaced with the current aid year data during each quarterly process. This table retains the previous quarters data to aid with comparisons to previous quarters.

All fields in this table mimic the FA\_AWARD table with the inclusion of SNAPSHOT\_STRM as part of the primary key of this table.

# FA\_STUDENT\_AWD\_CANCELED

## Table Description

The FA\_STUDENT\_AWD\_CANCELED table contains information for students whose financial aid award was canceled or declined. The source table includes AWARD\_PERIOD in the primary key reflecting if the record is associated to academic or non-academic (values A and N). To eliminate multiple records for an aid year, the extract chooses the minimum AWARD\_PERIOD prioritizing academic over non-academic.

FA\_STUDENT\_AWD\_CANCELED is a standalone table that may not have corresponding records in the other FA tables, which are restricted to students or awards found in the FA\_STUDENT\_AWARD table

## Data Elements

### EMPLID (PK)

**Data Type:** VARCHAR

**Size:** 11

**Definition:** The PeopleSoft unique identifier assigned to each student and employee. The same EMPLID is used across all pillars and all institutions for each student/employee. The same EMPLID is used whether the student is an employee or student or both. Excludes EMPLID's that begin with "X".

**Data Classification:** [Category 3](#)

**PeopleSoft Source:** CS.STDNT\_AWARDS.EMPLID

## INSTITUTION (PK)

Data Type: CHAR

Size: 5

**Definition:** The five-digit code used in ctcLink to identify each community or technical college in the state of Washington.

Data Classification: [Category 2](#)

PeopleSoft Source: CS.STDNT\_AWARDS.INSTITUTION

Lookup/Crosswalk: LOOKUP.DW\_REF\_ENR.COLLEGE\_MASTER

## AID\_YEAR (PK)

Data Type: CHAR

Size: 4

**Definition:** A ctcLink variable that indicates the financial aid year. The academic year begins with summer quarter and ends with spring quarter; however, the Financial Aid year may differ by college. Some colleges offer financial aid starting summer quarter thru spring quarter (header colleges), others offer aid fall thru summer quarter (trailing colleges). The value represents the calendar year in which the financial aid year ends.

Data Classification: [Category 2](#)

PeopleSoft Source: CS.ITEM\_TYPE\_FA.AID\_YEAR

Example of Valid Values:

Value	Value Description
2019	Academic year 2018-19
2022	Academic Year 2021-22
2023	Academic Year 2022-23

## ITEM\_TYPE (PK)

Data Type: VARCHAR

Size: 12

**Definition:** Used to identify, define, and categorize aid awarded by the colleges. Item types are the basic work unit of the Student Financials and Financial Aid modules.

Data Classification: [Category 3](#)

PeopleSoft Source: CS.STDNT\_AWARDS.ITEM\_TYPE

## CANCELED\_STATUS

Data Type: CHAR

Size: 1

**Definition:** Indicates if the award was canceled or declined.

Data Classification: [Category 3](#)

PeopleSoft Source: CS.STDNT\_AWARDS.AWARD\_STATUS

**Valid Values:**

Value	Value Description
C	Canceled
D	Declined

## CANCEL\_DECLINE\_AMT

**Data Type:** FLOAT

**Definition:** The amount of aid canceled or declined.

**Data Classification:** [Category 3](#)

**PeopleSoft Source:** Derived from CS.STDNT\_AWARDS using the following Case statement:

```
SUM(CASE  
    WHEN CANCEL_DECLINE_AMT = 0 AND HIGHEST_ACCEPT_AMT > 0 THEN  
    HIGHEST_ACCEPT_AMT  
    WHEN CANCEL_DECLINE_AMT = 0 AND HIGHEST_ACCEPT_AMT = 0 AND  
    HIGHEST_OFFER_AMT > 0 THEN HIGHEST_OFFER_AMT  
    ELSE CANCEL_DECLINE_AMT END)
```

## SNAPSHOT\_STRM

**Data Type:** CHAR

**Size:** 4

**Definition:** Reflects the STRM the last snapshot was taken. The data in this data is replaced each term during the aid year. For example, when processing winter data, summer and fall quarter data will be replaced to reflect any changes that may have been made. A snapshot of the data prior to its replacement is stored in the FA\_STUDENT\_AWARD\_SNAPSHOT table.

**Data Classification:** [Category 2](#)

## ACADEMIC\_YEAR

**Data Type:** CHAR

**Size:** 7

**Definition:** Reflects the ACADEMIC YEAR the last snapshot was taken. The data in this table is replaced each term during the aid year. For example, when processing winter data, summer and fall quarter data will be replaced to reflect any changes that may have been made.

**Data Classification:** [Category 2](#)

**Source:** Derived from CS.STDNT\_AWARDS.STRM.

**Lookup/Crosswalk:** LOOKUP.DW\_REF\_ENR.YRQ\_CONVERT

## LEGACY\_YEAR

**Data Type:** CHAR

**Size:** 3

**Definition:** A three-character field identifying the academic year in legacy terms. The academic year begins with summer quarter and ends with spring quarter.

**Data Classification:** [Category 2](#)

**Source:** Derived from CS.STDNT\_AWARDS.STRM.

**Lookup/Crosswalk:** LOOKUP.DW\_REF\_ENR.YRQ\_CONVERT

# FA\_STUDENT

## Table Description

The FA\_STUDENT table contains the information provided on the student's FAFSA or WAFSA during the financial aid year. **Not all students are required to submit a FAFSA or WAFSA for certain types of aid meaning that not all students in the FA\_STUDENT\_AWARD table have a record in the FA\_STUDENT table.**

Financial Aid staff at the colleges log into the Washington Student Achievement Council (WSAC) portal to download WASFA applications. These are loaded into ctcLink just like an ISIR record. WASFA's load into the ISIR\_STUDENT table and can be identified by an ISIR transaction number of 50 or greater.

## Data Elements

### EMPLID (PK)

**Data Type:** VARCHAR

**Size:** 11

**Definition:** The PeopleSoft unique identifier assigned to each student and employee. The same EMPLID is used across all pillars and all institutions for each student/employee. The same EMPLID is used whether the student is an employee or student or both. Excludes EMPLID's that begin with "X".

**Data Classification:** [Category 3](#)

**PeopleSoft Source:** CS. ISIR\_STUDENT.EMPLID

### INSTITUTION (PK)

**Data Type:** CHAR

**Size:** 5

**Definition:** The five-digit code used in ctcLink to identify each community or technical college in the state of Washington.

**Data Classification:** [Category 2](#)

PeopleSoft Source: CS. ISIR\_STUDENT.INSTITUTION

Lookup/Crosswalk: LOOKUP.DW\_REF\_ENR.COLLEGE\_MASTER

## AID\_YEAR (PK)

Data Type: CHAR

Size: 4

**Definition:** A ctcLink variable that indicates the financial aid year. The academic year begins with summer quarter and ends with spring quarter; however, the Financial Aid year may differ by college. Some colleges offer financial aid starting summer quarter thru spring quarter (header colleges), others offer aid fall thru summer quarter (trailing colleges). The value represents the calendar year in which the financial aid year ends.

Data Classification: [Category 2](#)

PeopleSoft Source: CS. ISIR\_STUDENT.AID\_YEAR

Example Valid Values:

Value	Value Description
2019	Academic year 2018-19
2022	Academic Year 2021-22
2023	Academic Year 2022-23

## SEX

Data Type: VARCHAR

Size: 1

**Definition:** A one-character field identifying the student's sex. This is a required data element for State or Contract funding. Collected from the student at time of Admission and/or Registration.

Data Classification: [Category 3](#)

PeopleSoft Source: CS.PS\_PERS\_DATA\_EFFDT.SEX

**Examples of Use:** This data element is used for reporting Distance Education enrollments, OFM reporting, IPEDS and Carl Perkins reporting.

Valid Values:

Value	Value Description
M	Male
F	Female
X	Not exclusively male or female
NULL	Not reported or "U" in PeopleSoft

## MARITAL\_STAT

Data Type: VARCHAR

Size: 1

**Definition:** Indicates the marital status reported by the student on their FAFSA or WAFSA.

**History:** Starting in Aid Year 2025, the valid values have been updated.

**Data Classification:** [Category 3](#)

**PeopleSoft Source:** CS. ISIR\_STUDENT.MARITAL\_STAT

**Valid Values Starting in Aid Year 2025:**

Value	Value Description
Null	Not Indicated
1	Single (Never married)
2	Married (not separated)
3	Remarried
4	Divorced
5	Separated
6	Widowed

**Valid Values Prior to Aid Year 2025:**

Value	Value Description
Null	Not Indicated
1	Single
2	Married
3	Divorced
4	Divorced
5	Widowed

## **DEPENDENTS** *(retired data element)*

**Data Type:** VARCHAR

**Size:** 1

**Definition:** Indicates if the student reported having dependents on the FAFSA.

**History:** Starting in Aid Year 2025, this data element is now protected by Federal Tax Information (FTI) category 4 Highly Sensitive data classification and is no longer populated. The field [FORMULA\\_TYPE](#) provides similar data.

**Data Classification:** [Category 3](#)

**PeopleSoft Source:** CS. ISIR\_STUDENT.DEPENDENTS

**Valid Values:**

Value	Value Description
Null	Not Indicated
1	Yes, has dependents
2	No, does not have dependents

## DEPNDCY\_STAT

**Data Type:** VARCHAR

**Size:** 1

**Definition:** The translated dependency status of the student that combines several dependency values into two.

**Data Classification:** [Category 3](#)

**Valid Values:**

Value	Value Description
D	Dependent
I	Independent

**PeopleSoft Source:** CS. ISIR\_STUDENT.DEPNDCY\_STAT

Derived using the following Case statement:

```
CASE
    WHEN A.DEPNDCY_STAT IN ('D','X','2')
    THEN 'D'
    WHEN A.DEPNDCY_STAT IN ('I','Y','3','1','Z')
    THEN 'I'
END
```

## VETERAN

**Data Type:** CHAR

**Size:** 1

**Definition:** Indicates the veteran status of the student as reported on the FAFSA or WAFSA

**History:** Starting in Aid Year 2025, values in the FAFSA are 1-Yes a veteran and Null. 2-No not a veteran is no longer an option on the FAFSA.

**Data Classification:** [Category 3](#)

**PeopleSoft Source:** CS. ISIR\_STUDENT.VETERAN

**Valid Values Starting in Aid Year 2025:**

Value	Value Description
Null	Not Indicated
1	Yes, a veteran

**Valid Values Prior to Aid Year 2025:**

Value	Value Description
Null	Not Indicated
1	Yes, a veteran
2	No, not a veteran



## CURRENT\_GRADE\_LVL

**Data Type:** VARCHAR

**Size:** 2

**Definition:** Indicates the current grade level of the student as reported on the FAFSA.

**History:** Starting in Aid Year 2025, values have changes.

**Data Classification:** [Category 3](#)

**PeopleSoft Source:** CS. ISIR\_STUDENT.CURRENT\_GRADE\_LVL

**Valid Values Starting in Aid Year 2025:**

Value	Value Description
Null	Not Indicated
1	First Year (Freshman)
2	Second Year (Sophomore)
3	Other Undergraduate (Junior or Senior)
4	College Graduate, Professional or Beyond (MBA, M.D., Ph.D., etc.)

**Valid Values Prior to Aid Year 2025:**

Value	Value Description
Null	Not Indicated
01	1st yr Never Attended
02	1st yr Attended Before
03	2nd yr Sophomore
04	3rd yr Junior
05	4th yr Senior
06	5th yr other UG
07	1st yr Grad/Prof
08	2nd yr Grad/Prof
09	3rd yr Grad/Prof
10	Beyond 3rd yr Grad/Prof

## FATHER\_GRADE\_LVL (retired data element)

**Data Type:** VARCHAR

**Size:** 1

**Definition:** Indicates the student's father's grade level as reported on the FAFSA.

**History:** Starting in Aid Year 2025, this value is no longer collected on the FAFSA. There is a field with similar data called [SFA STD PARATT](#).

**Examples of Use:** Used to set the FIRST\_GENERATION flag in the data warehouse STUDENT table.

**Data Classification:** [Category 3](#)

**PeopleSoft Source:** CS. ISIR\_PARENT.FATHER\_GRADE\_LVL

**Valid Values:**

Value	Value Description
Null	Not Indicated
1	Middle School
2	High School
3	College
4	Unknown

## MOTHER\_GRADE\_LVL (retired data element)

**Data Type:** VARCHAR

**Size:** 1

**Definition:** Indicates the student's mother's grade level as reported on the FAFSA.

**History:** Starting in Aid Year 2025, this data element is no longer collected on the FAFSA. There is a field with similar data called [SFA STD PARATT](#).

**Data Classification:** [Category 3](#)

**PeopleSoft Source:** CS. ISIR\_PARENT.MOTHER\_GRADE\_LVL

**Examples of Use:** Used to set the FIRST\_GENERATION flag in the data warehouse STUDENT table.

**Valid Values:**

Value	Value Description
Null	Not Indicated
1	Middle School
2	High School
3	College
4	Unknown

## SOURCE

**Data Type:** VARCHAR

**Size:** 30

**Definition:** This field describes the FAFSA, WAFSA or other transaction source for the Financial Aid Application

**Data Classification:** [Category 3](#)

**PeopleSoft Source:** Derived from CS.ISIR\_CONTROL. ISIR\_TXN\_NBR < 50 THEN 'FAFSA'  
WHEN ISIR\_TXN\_NBR >= 50 THEN 'WAFSA' ELSE 'OTHER'

## PELL\_ELIGIBILITY

**Data Type:** VARCHAR

**Size:** 1

**Definition:** An indicator if the student is eligible for federal PELL financial aid. The flag is set by the Dept of Ed. Central Processing System based on the information the student provides on their FAFSA.

**Data Classification:** [Category 3](#)

**PeopleSoft Source:** CS.ISIR\_CONTROL.PELL\_ELIGIBILITY

**Valid Values:**

Value	Value Description
Y	Yes, the student is eligible for PELL aid.
Null	The student is not eligible for PELL.

## HOUSING\_CODE\_1 (retired data element)

**Data Type:** VARCHAR

**Size:** 1

**Definition:** Indicates the students housing status while attending college collected on the FAFSA or WAFSA.

**History:** Starting in Aid Year 2025, this field is no longer collected on the FAFSA. There is a similar field called [HOUSING\\_TYPE\\_DW](#).

**Data Classification:** [Category 3](#)

**PeopleSoft Source:** CS.ISIR\_STUDENT.HOUSING\_CODE\_1

**Valid Values:**

Value	Value Description
Null	Not Reported
1	On-Campus
2	Off-Campus
3	Parents

## SNAPSHOT\_STRM

**Data Type:** CHAR

**Size:** 4

**Definition:** Reflects the STRM the last snapshot was taken. The data in this data is replaced each term during the aid year. For example, when processing winter data, summer and fall quarter data will be replaced to reflect any changes that may have been made. A snapshot of the data prior to its replacement is stored in the FA\_STUDENT\_AWARD\_SNAPSHOT table.

**Data Classification:** [Category 2](#)

## ACADEMIC\_YEAR

**Data Type:** CHAR

**Size:** 7

**Definition:** Reflects the ACADEMIC YEAR the last snapshot was taken. The data in this data is replaced each term during the aid year. For example, when processing winter data, summer and fall quarter data will be replaced to reflect any changes that may have been made. A snapshot of the data prior to its replacement is stored in the FA\_STUDENT\_AWARD\_SNAPSHOT table.

**Data Classification:** [Category 2](#)

**Source:** Derived from STRM.

**Lookup/Crosswalk:** LOOKUP.DW\_REF\_ENR.YRQ\_CONVERT

## LEGACY\_YEAR

**Data Type:** CHAR

**Size:** 3

**Definition:** A three-character field identifying the academic year. The academic year begins with summer quarter and ends with spring quarter.

**Data Classification:** [Category 2](#)

**Source:** Derived from STRM.

**Lookup/Crosswalk:** LOOKUP.DW\_REF\_ENR.YRQ\_CONVERT

**Examples of Valid Values:**

Value	Value Description
990	1999-2000
A01	2000-2001
B01	2010-2011
C01	2020-2021

## FAMILY\_SIZE *(retired data element)*

**Data Type:** VARCHAR

**Size:** 2

**Definition:** The Family Size information field indicates the number of family members a student has that combines several dependency values into two.

**History:** Starting in Aid Year 2025, the values used to derive this field are no longer collected on the FAFSA.

**Data Classification:** [Category 3](#)

**PeopleSoft Source:** CS. ISIR\_STUDENT, CS.ISIR\_PARENT

Derived using the following Case statement:

```
CASE
    WHEN A.DEPNDNCY_STAT IN ('D','X','2')
```

```

THEN B.NUMBER_IN_FAMILY
WHEN A.DEPNDNCY_STAT IN ('I','Y','3','1')
THEN A.NUM_FAMILY_MEMBERS
END

```

## HOUSING\_TYPE\_DW

**Data Type:** VARCHAR

**Size:** 1

**Definition:** Indicates the students housing status while attending college. Starting in Aid Year 2025 the value for Installation FA is set to 3 = Off-Campus for all colleges. The colleges populate student specific data during the setting of the student term budget to the appropriate housing status. The maximum effective date in Aid Year (and FA Effective Term is not null) is used to select the most recent status. Note: These values are different than those for HOUSING\_CODE\_1.

**History:** Starting in Aid Year 2025, added to Data Warehouse.

**Data Classification:** [Category 3](#)

**PeopleSoft Source:** CS.STDNT\_TERM\_BDGT.HOUSING\_TYPE

**Valid Values:**

Value	Value Description
1	On-Campus Housing
2	With Parent
3	Off-Campus

## SFA\_STD\_PARATT

**Data Type:** VARCHAR

**Size:** 1

**Definition:** Indicates the student's parents' prior college attendance and completion status.

**History:** Starting in Aid Year 2025, added to the Data Warehouse.

**Data Classification:** [Category 3](#)

**PeopleSoft Source:** CS.SFA\_ISIR\_STU.SFA\_STD\_PARATT

**Valid Values:**

Value	Value Description
NULL	Not Indicated
1	Neither parent attended college
2	One or both parents attended college, but neither parent completed college
3	One or both parents completed college
4	Don't know

# FA\_STUDENT\_NEED

## Table Description

The FA\_STUDENT\_NEED table contains information describing the financial need of the student. The source table contains AWARD\_PERIOD reflecting if the record is associated to academic or non-academic (values A and N). To eliminate multiple records for an aid year, the extract chooses the minimum AWARD\_PERIOD prioritizing academic over non-academic.

## Data Elements

### EMPLID (PK)

**Data Type:** VARCHAR

**Size:** 11

**Definition:** The PeopleSoft unique identifier assigned to each student and employee. The same EMPLID is used across all pillars and all institutions for each student/employee. The same EMPLID is used whether the student is an employee or student or both. Excludes EMPLID's that begin with "X".

**Data Classification:** [Category 3](#)

**PeopleSoft Source:** CS. STDNT\_AWRD\_PER.EMPLID

### INSTITUTION (PK)

**Data Type:** CHAR

**Size:** 5

**Definition:** The five-digit code used in ctcLink to identify each community or technical college in the state of Washington.

**Data Classification:** [Category 2](#)

**PeopleSoft Source:** CS. STDNT\_AWRD\_DISB.EMPLID

**Lookup/Crosswalk:** LOOKUP.DW\_REF\_ENR.COLLEGE\_MASTER

### AID\_YEAR (PK)

**Data Type:** CHAR

**Size:** 4

**Definition:** A ctcLink variable that indicates the financial aid year. The academic year begins with summer quarter and ends with spring quarter; however, the Financial Aid year may differ by college. Some colleges offer financial aid starting summer quarter thru spring quarter (header colleges), others offer aid fall thru summer quarter (trailing colleges). The value represents the calendar year in which the financial aid year ends.

**Data Classification:** [Category 2](#)

**PeopleSoft Source:** CS. STDNT\_AWRD\_DISB.AID\_YEAR

**Example Valid Values:**

Value	Value Description
2019	Academic year 2018-19
2022	Academic Year 2021-22
2023	Academic Year 2022-23

## FED\_EFC (retired data element)

**Data Type:** NUMERIC

**Size:** 38

**Scale:** 0

**Definition:** Expected Family Contribution. The dollar amount that a student and/or family, depending on Dependency Status, is expected to contribute to the Cost of Attendance.

**History:** Starting in Aid Year 2025, this data element is retired. There is a similar field called [STUDENT AID INDEX](#).

Per the government website, fsapartners.ed.gov, “Not only will students and families see a different measure of their ability to pay for college, but they will also experience a change in the methodology used to determine aid. The new need analysis formula removes the number of family members in college from the calculation, allows a minimum SAI of -1,500, and implements separate eligibility determination criteria for Federal Pell Grants.”

(<https://fsapartners.ed.gov/sites/default/files/2023-05/202425DRAFTSAIGuideSupplementEFCtoSAICrosswalk.pdf>)

**Data Classification:** [Category 3](#)

**PeopleSoft Source:** CS. STDNT\_AWD\_PER.FED\_EFC

## EFC\_STATUS (retired data element)

**Data Type:** CHAR

**Size:** 1

**Definition:** Status of the Expected Family Contribution (EFC). EFC Status is the status of the Federal Expected Family Contribution. A Rejected EFC means that there is something the student needs to correct before the Central Processor (Department of ED) can send an updated copy to the college. Unofficial means a correction has been made to the FAFSA/WASFA (typically from a college staff person during the verification process). If a FAFSA or WASFA is valid and in good standing, the status will be Official. In order to award to a student, the EFC must be in a status of Official.

**History:** Starting in Aid Year 2025, this data element is retired. [STUDENT AID INDEX STATUS](#) is a field with similar data.

**Data Classification:** [Category 3](#)

**PeopleSoft Source:** CS. STDNT\_AWD\_PER.EFC\_STATUS

**Valid Values:**

Value	Value Description
0	Official

Value	Value Description
R	Rejected
U	Unofficial

## FED\_NEED\_BASE\_AID

**Data Type:** Decimal

**Size:** 8

**Scale:** 2

**Definition:** The amount of federal need-based aid awarded to the student.

**Data Classification:** [Category 3](#)

**PeopleSoft Source:** CS. STDNT\_AWD\_PER.FED\_NEED\_BASE\_AID

## FED\_YEAR\_COA

**Data Type:** Decimal

**Size:** 8

**Scale:** 2

**Definition:** Federal Year Cost of Attendance amount. Cost of attendance (COA) is the average annual cost to attend a college. It includes tuition and fees, room and board, books, supplies, and other expenses. A budget category's item class designates whether the budget category contributes to the federal and institutional COA or contributes only to the institutional COA. The federal COA is the sum of budget amounts for budget categories designated as Federal. The institutional COA is the sum of budget amounts for budget categories designated as either Federal or Institutional.

**Data Classification:** [Category 3](#)

**PeopleSoft Source:** CS. STDNT\_AWD\_PER.FED\_YEAR\_COA

## INST\_YEAR\_COA

**Data Type:** Decimal

**Size:** 8

**Scale:** 2

**Definition:** Institution Year Cost of Attendance amount. Cost of attendance (COA) is the average annual cost to attend a college. It includes tuition and fees, room and board, books, supplies, and other expenses. A budget category's item class designates whether the budget category contributes to the federal and institutional COA or contributes only to the institutional COA. The federal COA is the sum of budget amounts for budget categories designated as Federal. The institutional COA is the sum of budget amounts for budget categories designated as either Federal or Institutional.

**Data Classification:** [Category 3](#)

**PeopleSoft Source:** CS. STDNT\_AWD\_PER.INST\_YEAR\_COA



## PELL\_YEAR\_COA

**Data Type:** Decimal

**Size:** 8

**Scale:** 2

**Definition:** PELL Year Cost of Attendance. The students COA is calculated by adding up the budget items that have an associated Pell Category. This COA is used when calculating Pell Grants using the Regular Federal Pell Grant Schedule.

**Data Classification:** [Category 3](#)

**PeopleSoft Source:** CS. STDNT\_AWD\_PER.PELL\_YEAR\_COA

## FED\_NEED

**Data Type:** Decimal

**Size:** 8

**Scale:** 2

**Definition:** Federal Need is determined by Federal COA minus the Student Aid Index. The amount of total aid a student can receive from need-based programs can't exceed their financial need. For example, Pell Grants are considered the first source of aid for students with financial need, and eligibility is determined by subtracting the student's SAI from their COA.

**Data Classification:** [Category 3](#)

**PeopleSoft Source:** CS. STDNT\_AWD\_PER.FED\_NEED

## INST\_NEED

**Data Type:** Decimal

**Size:** 8

**Scale:** 2

**Definition:** Institutional Need is determined by Institution COA minus the Student Aid Index. The amount of total aid a student can receive from need-based programs can't exceed their financial need.

**Data Classification:** [Category 3](#)

**PeopleSoft Source:** CS. STDNT\_AWD\_PER.INST\_NEED

## FED\_UNMET

**Data Type:** Decimal

**Size:** 8

**Scale:** 2

**Definition:** Federal Unmet Need is determined by Federal Need minus Total Aid.

**Data Classification:** [Category 3](#)

**PeopleSoft Source:** CS. STDNT\_AWD\_PER.FED\_UNMET

## INST\_UNMET

**Data Type:** Decimal

**Size:** 8

**Scale:** 2

**Definition:** Institutional Unmet Need is determined by Institutional Need minus Total Aid.

**Data Classification:** [Category 3](#)

**PeopleSoft Source:** CS. STDNT\_AWD\_PER.INST\_UNMET

## FED\_PARENT\_CONTRB (*retired data element*)

**Data Type:** NUMERIC

**Size:** 38

**Scale:** 0

**Definition:** Federal Parent Contribution. The dollar amount that a dependent's parent is expected to contribute to the Federal Cost of Attendance.

**History:** Starting in Aid Year 2025, this data element is no longer collected on the FAFSA.

**Data Classification:** [Category 3](#)

**PeopleSoft Source:** CS. STDNT\_AWD\_PER.FED\_PARENT\_CONTRB

## FED\_STDNT\_CONTRB (*retired data element*)

**Data Type:** NUMERIC

**Size:** 38

**Scale:** 0

**Definition:** Federal Student Contribution. The dollar amount that a student is expected to contribute to the Federal Cost of Attendance.

**History:** Starting in Aid Year 2025, this data element is no longer collected on the FAFSA.

**Data Classification:** [Category 3](#)

**PeopleSoft Source:** CS. STDNT\_AWD\_PER.FED\_STUDENT\_CONTRB

## SNAPSHOT\_STRM

**Data Type:** CHAR

**Size:** 4

**Definition:** Reflects the STRM the last snapshot was taken. The data in this data is replaced each term during the aid year. For example, when processing winter data, summer and fall quarter data will be replaced to reflect any changes that may have been made.

**Data Classification:** [Category 2](#)

## ACADEMIC\_YEAR

**Data Type:** CHAR

**Size:** 7

**Definition:** Reflects the ACADEMIC YEAR the last snapshot was taken. The data in this data is replaced each term during the aid year. For example, when processing winter data, summer and fall quarter data will be replaced to reflect any changes that may have been made.

**Data Classification:** [Category 2](#)

**Source:** Derived from AID\_YEAR.

**Lookup/Crosswalk:** LOOKUP.DW\_REF\_ENR.YRQ\_CONVERT

## LEGACY\_YEAR

**Data Type:** CHAR

**Size:** 3

**Definition:** A three-character field identifying the academic year in legacy terms. The academic year begins with summer quarter and ends with spring quarter.

**Data Classification:** [Category 2](#)

**Source:** Derived from STRM.

**Lookup/Crosswalk:** LOOKUP.DW\_REF\_ENR.YRQ\_CONVERT

**Valid Values:**

Value	Value Description
990	1999-2000
A01	2000-2001
B01	2010-2011
C01	2020-2021

## STUDENT\_INCOME

**Data Type:** FLOAT

**Definition:** Student Income

**History:** Prior to Aid Year 2025, this data element was derived using a complex Case statement with fields from ISIR\_STUDENT. For code details, please reference version 1.1 Financial Aid data dictionary.

**Data Classification:** [Category 3](#)

**PeopleSoft Source:** Starting in Aid Year 2025, CS.ISIR\_00\_2\_EC.STU\_TOTAL\_INC

**Examples of Use:** This data element is used when setting the IPEDS Income Range for the reporting of the IPEDS Financial Aid survey.

## TOTAL\_PARENT\_INCOME

**Data Type:** FLOAT

**Definition:** Parent Total Income for students with dependent status.

**History:** Prior to Aid Year 2025, this data element was derived using a complex Case statement with fields from ISIR\_STUDENT and ISIR\_PARENT that are now protected by Federal Tax Information (FTI) category 4 Highly Sensitive data classification and no longer populated.

**Data Classification:** [Category 3](#)

**PeopleSoft Source:** Starting in Aid Year 2025, CS.ISIR\_00\_2\_EC.TOTAL\_INCOME

**Examples of Use:** This data element is used when setting the IPEDS Income Range for the reporting of the IPEDS Financial Aid survey.

## FAMILY\_INCOME

**Data Type:** FLOAT

**Definition:** Family Income is determined based upon the student dependency status and is populated with Student Total Income if Independent status and with Student Total Income + Parent Income if dependent status.

**History:** Prior to Aid Year 2025, this data element was derived using a complex Case statement with fields from ISIR\_STUDENT and ISIR\_PARENT that are now protected by Federal Tax Information (FTI) category 4 Highly Sensitive data classification and no longer populated.

**Data Classification:** [Category 3](#)

**PeopleSoft Source:** Starting in Aid Year 2025, CS.ISIR\_00\_2\_EC.FISAP\_TOTAL\_INC

**Examples of Use:** This data element is used when setting the IPEDS Income Range for the reporting of the IPEDS Financial Aid survey.

## STUDENT\_AID\_INDEX

**Data Type:** NUMERIC

**Size:** 38

**Scale:** 0

**Definition:** Student Aid Index (SAI). A formula-based index number ranging from -1500 to 999999. A student's SAI range helps the college determine how much financial support is needed. A negative SAI indicates the student has a higher financial need. The FORMULA\_TYPE (in FA\_STUDENT) is used to determine the calculation

SAI Calculation – Dependent Student

The student's SAI is determined by adding the parents' contribution, the student's contribution from available income, and the student's contribution from assets. The SAI may be negative (but not less than -1,500).

SAI Calculation – Independent Student without Dependents other than a Spouse

The student's SAI is determined by adding the student's contribution from income and the student's contribution from assets. The SAI may be negative (but not less than -1,500).

SAI Calculation - Independent Student with Dependents Other than a Spouse

The student's available income and contribution from assets are added together to determine the student's adjusted available income, which can be a negative number. The total student's contribution from adjusted available income is calculated from the amounts and rates in "Table C6: Assessment from Adjusted Available Income" in the 2024-25 SAI Formula Guide. The rates in Table C6 increase from 22% to 47% as the adjusted available income increases. This is based on the principle that as income increases beyond the amount needed to maintain a basic standard of living, the portion used for family maintenance decreases and the portion available for discretionary purposes increases. Therefore, a progressively larger amount of income may be contributed toward postsecondary educational costs. The number resulting from the assessment according to Table C6 is the student's SAI and may be negative but not less than -1,500. (<https://fsapartners.ed.gov/knowledge-center/fsa-handbook/2024-2025/application-and-verification-guide/ch3-student-aid-index-sai-and-pell-grant-eligibility>)

**History:** Starting in Aid Year 2025, this data element was added to the Data Warehouse. Prior to Aid Year 2025, FED\_EFC was the field that contained similar data.

**Data Classification:** [Category 3](#)

**PeopleSoft Source:** CS.ISIR\_00\_2\_EC.IWD\_PRIMARY\_EFC

**Valid Values:** -1500 to 999999, Null

## STUDENT\_AID\_INDEX\_STATUS

**Data Type:** VARCHAR

**Size:** 1

**Definition:** Status of the Student Aid Index (SAI). SAI Status is the status of the Student Aid Index. A Rejected SAI means that there is something the student needs to correct before the Central Processor (Department of ED) can send an updated copy to the college. Unofficial means a correction has been made to the FAFSA/WASFA (typically from a college staff person during the verification process). Provisional status allows the student to complete the FAFSA as an Independent student, but must be Official before awarding. If a FAFSA or WASFA is valid and in good standing, the status will be Official. In order to award to a student, the SAI must be in a status of Official.

**History:** Starting in Aid Year 2025, this data element added to the Data Warehouse.

**Data Classification:** [Category 3](#)

**PeopleSoft Source:** CS.STDNT\_AWD\_PER.EFC\_STATUS

**Valid Values:**

Value	Value Description
O	Official
R	Rejected
U	Unofficial
Z	Provisional

## FORMULA\_TYPE

**Data Type:** VARCHAR

**Size:** 1

**Definition:** Student Aid Index (SAI) Formula Type identifies the formula used to calculate the SAI. The formula type is determined in the ISIR by evaluating the student's dependency status, marital status and dependents.

**History:** Starting in Aid Year 2025, added the Data Warehouse.

**Data Classification:** [Category 3](#)

**PeopleSoft Source:** CS.ISIR\_00\_2\_EC.FORMULA\_TYPE

**Valid Values:**

Value	Value Description
NULL	Not Indicated
A	Dependent
B	Independent without dependents other than a spouse
C	Independent with dependents other than a spouse

# Appendix A: Data Classification

Each data element in the Data Warehouse is associated with a category classification that indicates the method of which to use and store the data.

For more information, see the [Data Classification](#) brief.

Category	Description
<b>Category 1</b>	<b>Public Information</b> SBCTC does not consider any Data Warehouse data to be category 1. SBCTC does not release data to the public unless specifically requested. The release of public information is reserved for the college’s discretion based upon their FERPA directory information policies.
<b>Category 2</b>	<b>Sensitive Information</b> Student related information that is considered “directory information” under FERPA and is generally not considered harmful or to be an invasion of privacy if released. This information can be disclosed to outside organizations with the student’s prior consent. This is information that would be released during a public records request of Data Warehouse data.
<b>Category 3</b>	<b>Confidential Information</b> Enrollment information protected under FERPA, personnel and financial data. Category 3 includes all data elements except those explicitly stated in categories 2 and 4. Category 3 data is not distributed unless governed by a contract or data sharing agreement.
<b>Category 4</b>	<b>Confidential Information requiring Special Handling</b> Highly confidential data that is exempt from disclosure under applicable state and federal laws such as personally identifiable data protected under FERPA. Category 4 data is information whose unauthorized use, access, disclosure, acquisition, modification, loss, or deletion could result in severe damage to SBCTC or colleges, students, employees or customers. This information has limited use per specific state and federal laws.

# Appendix B: Historical Reference Appendix

## KEY DIFFERENCES BETWEEN DATA WAREHOUSE FINAID 2.0 AND 3.0

- Data selection is based on aid year in FA 3.0 but was based on the year associated to the STRM or YR\_SES in FA 2.0. This means AID\_YEAR is part of the primary key in FA 3.0 but not in FA 2.0. This affects which years the trailing Summer school records are associated to.

For example:

- **FA 2.0:** STRM 2235 and YR\_SES C341 records for trailing Summer schools in aid year 2023 were inserted into the C34 tables with YEAR = C34 as part of the Primary Key. This means you will find some 2235/C341 records in the table with AID\_YEAR = 2023 and some with AID\_YEAR = 2024.
- **FA 3.0:** STRM 2235 and YR\_SES C341 records for trailing Summer schools in aid year 2023 were inserted into the tables with AID\_YEAR = 2023 as part of the Primary Key.
- SSN is not required to be selected into FA 3.0 but was required in FA 2.0. EMPLID is the primary key identifier in FA 3.0.
- Awards with aid amounts equal to \$0 were selected into FA 2.0 but not into FA 3.0.
- FA 3.0 includes awards with 4 award status codes (amount\_status 1 - 4). FA 2.0 included awards with 3 award status codes for ctcLink colleges (awd\_status 1 - 3). For legacy colleges, FA 2.0 included all award status codes used (awd\_status 0-9 and A-Z).
- FA 2.0 only selected award codes with an active effective status but FA 3.0 includes both active and inactive award codes (i.e. item types) in the FA\_AWARD table.
- **Aid Offered** (used for all IPEDS reporting except loans)
  - FA 2.0: awd\_status = 1 (or status = "O" from the legacy crosswalk)
  - FA 3.0: amount\_status = 1
- **Aid Disbursed/Received** (used for most non-IPEDS reporting and used for reporting IPEDS loans)
  - FA 2.0: awd\_status = 2 (or status = "R" from the legacy crosswalk)
  - FA 3.0: amount\_status = 4
- **Primary Key**
  - **FA 2.0 tables:** primary key selection based on the year found in YR\_SES (e.g. C341 records for trailing Summer schools in aid year 2023 would be inserted into the C34 tables with YEAR = C34 as part of the Primary Key)
  - **FA 3.0 tables:** primary key selection based on aid year (e.g. C341 records for trailing Summer schools in aid year 2023 would be inserted with AID\_YEAR = C23 as part of the Primary Key)





Content is licensed under a Creative Commons Attribution 4.0 International License, unless noted otherwise.

Washington State Board for Community and Technical Colleges